

## Recombinant Human AHSA1 Protein, GST-tagged

Cat. No. AHSA1-467H Lot. No. (See product label)

### SPECIFICATION

<b>Product Overview</b>	Human AHSA1 full-length ORF ( AAH00321, 1 a.a. - 338 a.a.) recombinant protein with GST-tag at N-terminal.
<b>Species</b>	Human
<b>Source</b>	Wheat Germ
<b>Description</b>	AHSA1 (Activator Of HSP90 ATPase Activity 1) is a Protein Coding gene. Diseases associated with AHSA1 include Stomatitis. Among its related pathways are Mechanisms of CFTR activation by S-nitrosoglutathione (normal and CF). GO annotations related to this gene include chaperone binding and ATPase activator activity. An important paralog of this gene is AHSA2.
<b>Molecular Mass</b>	62.92 kDa
<b>AA Sequence</b>	MAKWGEGDPRWIVEERANATNVNNWHWTERDASNWSTDKLTFLAVQVQNEEG KCEVTEVSKLDGEASINNRKGLIFFYEWVSVKLNWTGTSSKSGVQYKGVHVEIPNLSGE NSVDEVEISVSLAKDEPDTNLVALMKEEGVKLLREAMGIYISTLKTEFTQGMILPTMN GESVDPVGPALKTEERKAKPAPSKTQARVGVKIPTCKITLKETFLTSPPELYRVFT TQELVQAFTHAPATLEADRGGKFHMVDGNVSGEFTDLVPEKHIVMKWRFKSWPEG HFATITLTFIDKNGETELCMEGRGIPAPEEERTRQGWQRYFEGIKQTFGYGARLF
<b>Applications</b>	Enzyme-linked Immunoabsorbent Assay Western Blot (Recombinant protein) Antibody Production

 Tel: 1-631-559-9269 1-516-512-3133

 Email: [info@creative-biomart.com](mailto:info@creative-biomart.com)  Fax: 1-631-938-8127

 45-1 Ramsey Road, Shirley, NY 11967, USA

Protein Array

<b>Notes</b>	Best use within three months from the date of receipt of this protein.
<b>Storage</b>	Store at -80centigrade. Aliquot to avoid repeated freezing and thawing.
<b>Storage Buffer</b>	50 mM Tris-HCl, 10 mM reduced Glutathione, pH=8.0 in the elution buffer.

## GENE INFORMATION

<b>Gene Name</b>	AHSA1 AHA1, activator of heat shock 90kDa protein ATPase homolog 1 (yeast) [ Homo sapiens ]
<b>Official Symbol</b>	AHSA1
<b>Synonyms</b>	AHSA1; AHA1, activator of heat shock 90kDa protein ATPase homolog 1 (yeast); C14orf3, chromosome 14 open reading frame 3; activator of 90 kDa heat shock protein ATPase homolog 1; p38; AHA1; C14orf3;
<b>Gene ID</b>	10598
<b>mRNA Refseq</b>	NM_012111
<b>Protein Refseq</b>	NP_036243
<b>MIM</b>	608466
<b>UniProt ID</b>	O95433

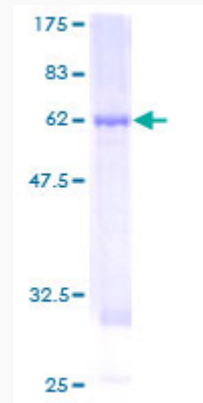
 Tel: 1-631-559-9269 1-516-512-3133

 Email: [info@creative-biomart.com](mailto:info@creative-biomart.com)  Fax: 1-631-938-8127

 45-1 Ramsey Road, Shirley, NY 11967, USA

**Quality Control**

**Testing:**



12.5% SDS-PAGE Stained with Coomassie Blue.

 Tel: 1-631-559-9269 1-516-512-3133

 Email: [info@creative-biomart.com](mailto:info@creative-biomart.com)  Fax: 1-631-938-8127

 45-1 Ramsey Road, Shirley, NY 11967, USA