

# Recombinant Full Length Human AHSG Protein, C-Flag-tagged

Cat. No. AHSG-446HFL Lot. No. (See product label)

## SPECIFICATION

**Product Overview** Recombinant Full Length Human AHSG Protein, fused to Flag-tag at C-terminus, was expressed in Mammalian cells.

**Species** Human

**Source** Mammalian Cells

**Description** The protein encoded by this gene is a negatively-charged serum glycoprotein that is synthesized by hepatocytes. The encoded protein consists of two polypeptide chains, which are both cleaved from a proprotein encoded from a single mRNA. It is involved in several processes, including endocytosis, brain development, and the formation of bone tissue. Defects in this gene are a cause of susceptibility to leanness.

**Form** 25 mM Tris HCl, pH 7.3, 100 mM glycine, 10% glycerol.

**Molecular Mass** 39.2 kDa

**AA Sequence**

```

MKSLVLLLCLAQLWGCHSAPHGPGLIYRQPNCDDEPETEEAALVAIDYINQNLPGYK
HTLNQIDEVKVWP QQPSGELFEIEIDTLETTCHVLDPTPVARCSVRQLKEHAVEGDC
DFQLLKLDGKFSVVYAKCDSSPDSAE DVRKVCQDCPLLAPLNDTRVVHAAKAALAA
FNAQNNGSNFQLEEISRAQLVPLPPSTYVEFTVSGTDCVA KEATEAAKCNLLAEKQ
YGFCKATLSEKLGGAEVAVTCTVFQTQPVTSSQPQPEGANEAVPTPVVDPDAPPS P
PLGAPGLPPAGSPDASHVLLAAPPQHQLHRAHYDLRHTFMGVVSLGSPSGEVSHP
RKTRTVVQPSVGAA
AGPVVPPCPGRIRHFKVTRTRPLEQKLISEEDLAANDILDYKDDDDKV

```

 Tel: 1-631-559-9269 1-516-512-3133

 Email: [info@creative-biomart.com](mailto:info@creative-biomart.com)  Fax: 1-631-938-8127

 45-1 Ramsey Road, Shirley, NY 11967, USA

|                         |   |
|-------------------------|---|
| <b>Purity</b>           | > 80% as determined by SDS-PAGE and Coomassie blue staining.  |
| <b>Stability</b>        | Stable for 12 months from the date of receipt of the product under proper storage and handling conditions. Avoid repeated freeze-thaw cycles. |
| <b>Storage</b>          | Store at -80 centigrade.  |
| <b>Concentration</b>    | >50 ug/mL as determined by microplate BCA method.   |
| <b>Preparation</b>      | Recombinant protein was captured through anti-DDK affinity column followed by conventional chromatography steps.                              |
| <b>Protein Families</b> | Druggable Genome, Secreted Protein  |
| <b>Full Length</b>      | Full L.   |

## GENE INFORMATION

|                        |   |
|------------------------|---|
| <b>Gene Name</b>       | AHSG alpha 2-HS glycoprotein [ Homo sapiens (human) ] |
| <b>Official Symbol</b> | AHSG  |
| <b>Synonyms</b>        | AHS; A2HS; HSGA; APMR1; FETUA                         |
| <b>Gene ID</b>         | 197   |
| <b>mRNA Refseq</b>     | NM_001622.4   |
| <b>Protein Refseq</b>  | NP_001613.2   |
| <b>MIM</b>             | 138680  |

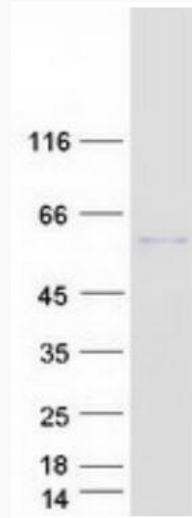
 Tel: 1-631-559-9269 1-516-512-3133

 Email: [info@creative-biomart.com](mailto:info@creative-biomart.com)  Fax: 1-631-938-8127

 45-1 Ramsey Road, Shirley, NY 11967, USA

UniProt ID

P02765



Coomassie blue staining of purified AHSG protein.

 Tel: 1-631-559-9269 1-516-512-3133

 Email: [info@creative-biomart.com](mailto:info@creative-biomart.com)  Fax: 1-631-938-8127

 45-1 Ramsey Road, Shirley, NY 11967, USA