

Recombinant Human AIF1L Protein, GST-Tagged

Cat. No. AIF1L-0010H **Lot. No.** (See product label)

SPECIFICATION

Product Overview	Human C9orf58 full-length ORF (NP_113614.1, 1 a.a. - 150 a.a.) recombinant protein with GST-tag at N-terminal.
Species	Human
Source	Wheat Germ
Description	AIF1L (Allograft Inflammatory Factor 1 Like) is a Protein Coding gene. GO annotations related to this gene include calcium ion binding and actin filament binding. An important paralog of this gene is AIF1.
Molecular Mass	43.5 kDa
AA Sequence	MSGELSNRFQGGKAFGLLKARQERRLAEinREFLCDQKYSDEENLPEKLTAFKEKY MEFDLNNEGEIDLMSLKRMMKLGVPKTHLEMKKMISEVTGGVSDTISYRDFVNMM LGKRS AVLKLVMMFEGKANESSPKPVGPPPERDIASLP
Applications	Enzyme-linked Immunoabsorbent Assay Western Blot (Recombinant protein) Antibody Production Protein Array
Notes	Best use within three months from the date of receipt of this protein.
Storage	Store at -80 centigrade. Aliquot to avoid repeated freezing and thawing.

 Tel: 1-631-559-9269 1-516-512-3133

 Email: info@creative-biomart.com  Fax: 1-631-938-8127

 45-1 Ramsey Road, Shirley, NY 11967, USA

Storage Buffer 50 mM Tris-HCl, 10 mM reduced Glutathione, pH=8.0 in the elution buffer.

GENE INFORMATION

Gene Name AIF1L allograft inflammatory factor 1-like [Homo sapiens]

Official Symbol AIF1L

Synonyms AIF1L; allograft inflammatory factor 1-like; C9orf58, chromosome 9 open reading frame 58; FLJ12783; IBA2; ionized calcium binding adapter molecule 2; ionized calcium-binding adapter molecule 2; C9orf58; MGC29466;

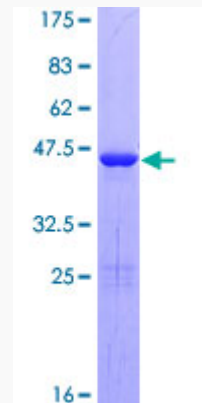
Gene ID 83543

mRNA Refseq NM_001185095

Protein Refseq NP_001172024

UniProt ID Q9BQI0

Quality Control Testing



12.5% SDS-PAGE Stained with Coomassie Blue.

 Tel: 1-631-559-9269 1-516-512-3133

 Email: info@creative-biomart.com  Fax: 1-631-938-8127

 45-1 Ramsey Road, Shirley, NY 11967, USA