

Recombinant Human AIMP1 Protein (Lys148-Lys312), N-His-tagged

Cat. No. AIMP1-0444H Lot. No. (See product label)

SPECIFICATION

Product Overview	Recombinant human AIMP1 (Lys148-Lys312) was fused with the N-His tag and was expressed in E. coli.
Species	Human
Source	E.coli
ProteinLength	Lys148-Lys312
Form	Lyophilized powder/frozen liquid
Molecular Mass	20.44 kDa
Purity	>90% as determined by SDS-PAGE
Notes	For research use only.
Storage	Use a manual defrost freezer and avoid repeated freeze thaw cycles. Store at 2 to 8 centigrade for one week. Store at -20 to -80 centigrade for twelve months from the date of receipt.
Storage Buffer	0.01M PBS, pH 7.4, 0.02% NLS
Reconstitution	Reconstitute in sterile water for a stock solution.

 Tel: 1-631-559-9269 1-516-512-3133

 Email: info@creative-biomart.com  Fax: 1-631-938-8127

 45-1 Ramsey Road, Shirley, NY 11967, USA

Shipping They are shipped out with dry ice/blue ice unless customers require otherwise.

GENE INFORMATION

Gene Name [AIMP1 aminoacyl tRNA synthetase complex-interacting multifunctional protein 1 \[Homo sapiens \(human\) \]](#)

Official Symbol [AIMP1](#)

Synonyms AIMP1; aminoacyl tRNA synthetase complex-interacting multifunctional protein 1; SCYE1, small inducible cytokine subfamily E, member 1 (endothelial monocyte activating); aminoacyl tRNA synthase complex-interacting multifunctional protein 1; ARS interacting multifunctional protein 1; EMAP II; EMAP 2; EMAPII; p43; ARS-interacting multifunctional protein 1; endothelial monocyte-activating polypeptide 2; multisynthase complex auxiliary component p43; endothelial-monocyte activating polypeptide II; multisynthetase complex auxiliary component p43; small inducible cytokine subfamily E, member 1 (endothelial monocyte-activating); HLD3; EMAP2; SCYE1;

Gene ID [9255](#)

mRNA Refseq [NM_001142415](#)

Protein Refseq [NP_001135887](#)

MIM [603605](#)

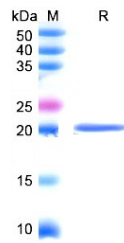
UniProt ID [Q12904](#)

 Tel: 1-631-559-9269 1-516-512-3133

 Email: info@creative-biomart.com  Fax: 1-631-938-8127

 45-1 Ramsey Road, Shirley, NY 11967, USA

SDS-PAGE



 Tel: 1-631-559-9269 1-516-512-3133

 Email: info@creative-biomart.com  Fax: 1-631-938-8127

 45-1 Ramsey Road, Shirley, NY 11967, USA