

Recombinant Human AK3 Protein, GST-tagged

Cat. No. AK3-486H Lot. No. (See product label)

SPECIFICATION

Product Overview	Human AK3 full-length ORF (NP_057366.2, 1 a.a. - 227 a.a.) recombinant protein with GST-tag at N-terminal.
Species	Human
Source	Wheat Germ
Description	The protein encoded by this gene is a GTP:ATP phosphotransferase that is found in the mitochondrial matrix. Several transcript variants encoding a few different isoforms have been found for this gene. [provided by RefSeq, Dec 2010]
Molecular Mass	52 kDa
AA Sequence	MGASARLLRAVIMGAPGSGKGTVSSRITTHFELKHLSSGDLLRDNMLRGTEIGVLAK AFIDQGKLI PDDVMTRLALHELK NLTQYSWLLDGF PRTL PQA EALDRAYQIDTVINLN VPFEVIKQRLTARWIHPASGRVYNI EFNPPKTVGIDDLTGEPLIQREDDKPETVIKRLK AYEDQTKPVLEYYQKKG VLETFSGTETNKIWPYVYAF LQTKVPQRSQKASVTP
Applications	Enzyme-linked Immunoabsorbent Assay Western Blot (Recombinant protein) Antibody Production Protein Array
Notes	Best use within three months from the date of receipt of this protein.

 Tel: 1-631-559-9269 1-516-512-3133

 Email: info@creative-biomart.com  Fax: 1-631-938-8127

 45-1 Ramsey Road, Shirley, NY 11967, USA

Storage Store at -80centigrade. Aliquot to avoid repeated freezing and thawing.

Storage Buffer 50 mM Tris-HCl, 10 mM reduced Glutathione, pH=8.0 in the elution buffer.

GENE INFORMATION

Gene Name AK3 adenylate kinase 3 [Homo sapiens]

Official Symbol AK3

Synonyms AK3; adenylate kinase 3; adenylate kinase 3 like 1, adenylate kinase 6, AK3L1, AK6; GTP:AMP phosphotransferase, mitochondrial; AKL3L1; adenylate kinase 3 alpha-like 1; adenylate kinase 6, adenylate kinase 3 like 1; AK6; FIX; AK3L1; AKL3L;

Gene ID 50808

mRNA Refseq NM_001199852

Protein Refseq NP_001186781

MIM 609290

UniProt ID Q9UIJ7

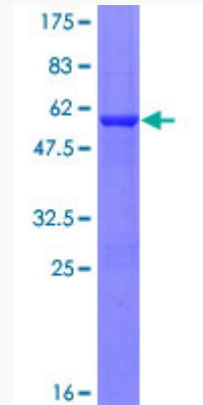
 Tel: 1-631-559-9269 1-516-512-3133

 Email: info@creative-biomart.com  Fax: 1-631-938-8127

 45-1 Ramsey Road, Shirley, NY 11967, USA

Quality Control

Testing:



12.5% SDS-PAGE Stained with Coomassie Blue.

 Tel: 1-631-559-9269 1-516-512-3133

 Email: info@creative-biomart.com  Fax: 1-631-938-8127

 45-1 Ramsey Road, Shirley, NY 11967, USA