

Recombinant Human AKAP10 Protein, GST-tagged

Cat. No. AKAP10-396H Lot. No. (See product label)

SPECIFICATION

Product Overview	Human AKAP10 full-length ORF (NP_009133.2, 1 a.a. - 662 a.a.) recombinant protein with GST-tag at N-terminal.
Species	Human
Source	Wheat Germ
Description	This gene encodes a member of the A-kinase anchor protein family. A-kinase anchor proteins bind to the regulatory subunits of protein kinase A (PKA) and confine the holoenzyme to discrete locations within the cell. The encoded protein is localized to mitochondria and interacts with both the type I and type II regulatory subunits of PKA. Polymorphisms in this gene may be associated with increased risk of arrhythmias and sudden cardiac death. [provided by RefSeq, May 2012]
Molecular Mass	100.2 kDa
AA Sequence	MRGAGPSPRQSPRTLRPDPGPAMSFRRKVKGKEQEKTSDVKSISVHSPQKS TKNHALLEAAGPSHVAINAISANMDSFSSSRTATLKKQPSHMEAAHFGDLGRSCLDY QTQETKSSLSKTLEQVLHDTIVLPYFIQFMELRRMEHLVKFWLEAESFHSTTWSRIRA HSLNTVKQSSLAEPVSPSKKHETTASFLTDSLDRLEDSGSAQLFMTHSEGIDLNNR TNSTQNHLLLSQECDSAHSRLRLEMARAGTHQVSMETQESSSTLTVASRNSPASPLK ELSGKLMKSIEQDAVNTFTKYISPDAAKPIPITEAMRNDIARICGEDGQVDPNCFVLA QSIVFSAMEQEHFSEFLRSHHFCKYQIEVLTSQTVYLADILFCESALFYFSEYMEKED AVNILQFWLAADNFQSQLAAKKGQYDGQEAQNDAFILDYDKYFSLQATHPLGFDDVV

 Tel: 1-631-559-9269 1-516-512-3133

 Email: info@creative-biomart.com  Fax: 1-631-938-8127

 45-1 Ramsey Road, Shirley, NY 11967, USA



RLEIESNICREGGPLPNCFTTPLRQAWTTMEKVFLPGFLSSNLYYKYLNLIHSVRGD
EFLGGNVSLTAPGSVGPDESHPGSSDSSASQSSVKKASIKILKNFDEAIIVDAASLD
PESLYQRTYAGKMTFGRVSDLGQFIRESEPEPDVRKSKGSMFSQAMKKWVQGNTD
EAQEELAWKIAKMIVSDIMQQAQYDQPLEKSTKL

Applications Enzyme-linked Immunoabsorbent Assay; Western Blot (Recombinant protein);
Antibody Production; Protein Array

Notes Best use within three months from the date of receipt of this protein.

Storage Store at -80 centigrade. Aliquot to avoid repeated freezing and thawing.

Storage Buffer 50 mM Tris-HCl, 10 mM reduced Glutathione, pH=8.0 in the elution buffer.

GENE INFORMATION

Gene Name [AKAP10 A kinase \(PRKA\) anchor protein 10 \[Homo sapiens \]](#)

Official Symbol [AKAP10](#)

Synonyms AKAP10; A kinase (PRKA) anchor protein 10; A-kinase anchor protein 10, mitochondrial; D AKAP2; dual specificity A kinase anchoring protein 2; MGC9414; mitochondrial A kinase PPKA anchor protein 10; PRKA10; protein kinase A anchoring protein 10; AKAP-10; D-AKAP-2; protein kinase A-anchoring protein 10; a kinase anchor protein 10, mitochondrial; dual specificity A kinase-anchoring protein 2; dual-specificity A-kinase anchoring protein 2; D-AKAP2;

Gene ID [11216](#)

mRNA Refseq [NM_007202](#)

Tel: 1-631-559-9269 1-516-512-3133

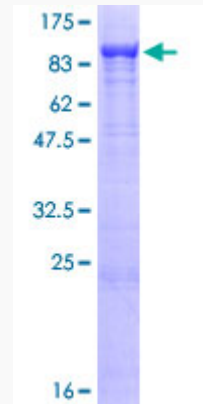
Email: info@creative-biomart.com Fax: 1-631-938-8127

45-1 Ramsey Road, Shirley, NY 11967, USA

Protein Refseq NP_009133

MIM 604694

UniProt ID O43572



12.5% SDS-PAGE Stained with Coomassie Blue.

Tel: 1-631-559-9269 1-516-512-3133

Email: info@creative-biomart.com Fax: 1-631-938-8127

45-1 Ramsey Road, Shirley, NY 11967, USA