

Recombinant Human AKAP11 Protein, His-tagged

Cat. No. AKAP11-395H Lot. No. (See product label)

SPECIFICATION

Product Overview	Recombinant Human AKAP11(Leu1650~Ala1901) fused with His tag at N-terminal was expressed in E. coli.
Species	Human
Source	E.coli
ProteinLength	Leu1650~Ala1901
Description	The A-kinase anchor proteins (AKAPs) are a group of structurally diverse proteins, which have the common function of binding to the regulatory subunit of protein kinase A (PKA) and confining the holoenzyme to discrete locations within the cell. This gene encodes a member of the AKAP family. The encoded protein is expressed at high levels throughout spermatogenesis and in mature sperm. It binds the RI and RII subunits of PKA in testis. It may serve a function in cell cycle control of both somatic cells and germ cells in addition to its putative role in spermatogenesis and sperm function.
Form	PBS, pH7.4, containing 0.01% SKL, 1mM DTT, 5% Trehalose and Proclin300.
Molecular Mass	31.4kDa
Endotoxin	<1.0EU per 1ug (determined by the LAL method)
Purity	> 95%

 Tel: 1-631-559-9269 1-516-512-3133

 Email: info@creative-biomart.com  Fax: 1-631-938-8127

 45-1 Ramsey Road, Shirley, NY 11967, USA

Applications	Positive Control; Immunogen; SDS-PAGE; WB. If bio-activity of the protein is needed, please check active protein
Stability	The thermal stability is described by the loss rate. The loss rate was determined by accelerated thermal degradation test, that is, incubate the protein at 37 centigrade for 48h, and no obvious degradation and precipitation were observed. The loss rate is less than 5% within the expiration date under appropriate storage condition.
Storage	Avoid repeated freeze/thaw cycles. Store at 2-8 centigrade for one month. Aliquot and store at -80 centigrade for 12 months.
Reconstitution	Reconstitute in PBS or others

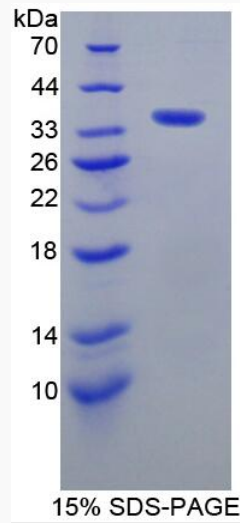
GENE INFORMATION

Gene Name	AKAP11 A-kinase anchoring protein 11 [Homo sapiens]
Official Symbol	AKAP11
Synonyms	PRKA11; AKAP-11; AKAP220; PPP1R44; A kinase (PRKA) anchor protein 11; A-kinase anchor protein 220 kDa
Gene ID	11215
mRNA Refseq	NM_016248
Protein Refseq	NP_057332
UniProt ID	Q9UKA4

 Tel: 1-631-559-9269 1-516-512-3133

 Email: info@creative-biomart.com  Fax: 1-631-938-8127

 45-1 Ramsey Road, Shirley, NY 11967, USA



 Tel: 1-631-559-9269 1-516-512-3133

 Email: info@creative-biomart.com  Fax: 1-631-938-8127

 45-1 Ramsey Road, Shirley, NY 11967, USA