

Recombinant Human AKAP11 Protein, GST-tagged

Cat. No. AKAP11-397H Lot. No. (See product label)

SPECIFICATION

Product Overview	Human AKAP11 partial ORF (NP_057332, 1801 a.a. - 1901 a.a.) recombinant protein with GST-tag at N-terminal.
Species	Human
Source	Wheat Germ
Description	The A-kinase anchor proteins (AKAPs) are a group of structurally diverse proteins, which have the common function of binding to the regulatory subunit of protein kinase A (PKA) and confining the holoenzyme to discrete locations within the cell. This gene encodes a member of the AKAP family. The encoded protein is expressed at high levels throughout spermatogenesis and in mature sperm. It binds the RI and RII subunits of PKA in testis. It may serve a function in cell cycle control of both somatic cells and germ cells in addition to its putative role in spermatogenesis and sperm function. [provided by RefSeq, Jul 2008]
Molecular Mass	36.85 kDa
AA Sequence	EGLGQDGKTLITNIDMEPCTVDPQLRILQWLIASEAEVAELYFHDSANKEFMLLSKQLQEKGWKVGDLLQAVLQYYEVMKASSEERCKSLFDWLLENA
Applications	Enzyme-linked Immunoabsorbent Assay; Western Blot (Recombinant protein); Antibody Production; Protein Array
Notes	Best use within three months from the date of receipt of this protein.

 Tel: 1-631-559-9269 1-516-512-3133

 Email: info@creative-biomart.com  Fax: 1-631-938-8127

 45-1 Ramsey Road, Shirley, NY 11967, USA

Storage Store at -80 centigrade. Aliquot to avoid repeated freezing and thawing.

Storage Buffer 50 mM Tris-HCl, 10 mM reduced Glutathione, pH=8.0 in the elution buffer.

GENE INFORMATION

Gene Name [AKAP11 A-kinase anchoring protein 11 \[Homo sapiens \(human\) \]](#)

Official Symbol [AKAP11](#)

Synonyms AKAP11; A-kinase anchoring protein 11; PRKA11; AKAP-11; AKAP220; PPP1R44; A-kinase anchor protein 11; A kinase (PRKA) anchor protein 11; A-kinase anchor protein 220 kDa; A-kinase anchoring protein, 220kDa; a kinase anchor protein 220 kDa; protein kinase A anchoring protein 11; protein phosphatase 1, regulatory subunit 44

Gene ID [11215](#)

mRNA Refseq [NM_016248](#)

Protein Refseq [NP_057332](#)

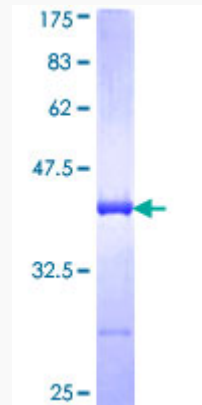
MIM [604696](#)

UniProt ID [Q9UKA4](#)

 Tel: 1-631-559-9269 1-516-512-3133

 Email: info@creative-biomart.com  Fax: 1-631-938-8127

 45-1 Ramsey Road, Shirley, NY 11967, USA



12.5% SDS-PAGE Stained with Coomassie Blue.

 Tel: 1-631-559-9269 1-516-512-3133

 Email: info@creative-biomart.com  Fax: 1-631-938-8127

 45-1 Ramsey Road, Shirley, NY 11967, USA