

Recombinant Human AKAP12 Protein, GST-tagged

Cat. No. AKAP12-398H Lot. No. (See product label)

SPECIFICATION

Product Overview	Human AKAP12 partial ORF (NP_005091, 1675 a.a. - 1782 a.a.) recombinant protein with GST-tag at N-terminal.
Species	Human
Source	Wheat Germ
Description	<p>The A-kinase anchor proteins (AKAPs) are a group of structurally diverse proteins, which have the common function of binding to the regulatory subunit of protein kinase A (PKA) and confining the holoenzyme to discrete locations within the cell. This gene encodes a member of the AKAP family. The encoded protein is expressed in endothelial cells, cultured fibroblasts, and osteosarcoma cells. It associates with protein kinases A and C and phosphatase, and serves as a scaffold protein in signal transduction. This protein and RII PKA colocalize at the cell periphery. This protein is a cell growth-related protein. Antibodies to this protein can be produced by patients with myasthenia gravis. Alternative splicing of this gene results in two transcript variants encoding different isoforms. [provided by RefSeq, Jul 2008]</p>
Molecular Mass	37.62 kDa
AA Sequence	VPEDDGHALLAERIEKSLVEPKEDKEGDDVDDPENQNSALADTDASGGLTKESPDT NGPKQKEKEDAQVELQEGKVHSESDKAITPQAQEELQKQERESAKSELTES
Applications	Enzyme-linked Immunoabsorbent Assay; Western Blot (Recombinant protein); Antibody Production; Protein Array

 Tel: 1-631-559-9269 1-516-512-3133

 Email: info@creative-biomart.com  Fax: 1-631-938-8127

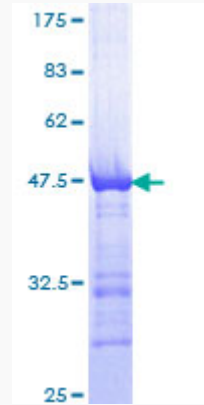
 45-1 Ramsey Road, Shirley, NY 11967, USA

Notes	Best use within three months from the date of receipt of this protein.
Storage	Store at -80 centigrade. Aliquot to avoid repeated freezing and thawing.
Storage Buffer	50 mM Tris-HCl, 10 mM reduced Glutathione, pH=8.0 in the elution buffer.
GENE INFORMATION	
Gene Name	AKAP12 A kinase (PRKA) anchor protein 12 [Homo sapiens]
Official Symbol	AKAP12
Synonyms	AKAP12; A kinase (PRKA) anchor protein 12; A kinase (PRKA) anchor protein (gravin) 12; A-kinase anchor protein 12; AKAP250; gravin; Src Suppressed C Kinase Substrate; SSeCKS; AKAP 250; kinase scaffold protein gravin; A-kinase anchor protein, 250kDa; Src-Suppressed C Kinase Substrate; myasthenia gravis autoantigen gravin; FLJ20945; FLJ97621; DKFZp686M0430; DKFZp686O0331;
Gene ID	9590
mRNA Refseq	NM_005100
Protein Refseq	NP_005091
MIM	604698
UniProt ID	Q02952

 Tel: 1-631-559-9269 1-516-512-3133

 Email: info@creative-biomart.com  Fax: 1-631-938-8127

 45-1 Ramsey Road, Shirley, NY 11967, USA



12.5% SDS-PAGE Stained with Coomassie Blue.

 Tel: 1-631-559-9269 1-516-512-3133

 Email: info@creative-biomart.com  Fax: 1-631-938-8127

 45-1 Ramsey Road, Shirley, NY 11967, USA