

Recombinant Human AKAP2 Protein, His-tagged

Cat. No. AKAP2-107H Lot. No. (See product label)

SPECIFICATION

Product Overview	Recombinant Human AKAP2 Protein (Met1-Pro235) with N-His tag was expressed in E. coli.
Species	Human
Source	E.coli
ProteinLength	Met1-Pro235
Description	This gene belongs to the paralemmin downstream gene (PDG) family defined in PMID:22855693. Paralemmin downstream genes may have evolved contiguously with the paralemmin genes and are associated with other paralemmin paralogs in humans and several other taxa. The gene encodes three distinct protein isoforms, the PALM2 isoform, the AKAP2 isoform and the PALM2-AKAP2 isoform. The biological significance of the PALM2-AKAP2 isoforms is yet unknown. Earlier, PALM2 and AKAP2 were annotated as separate genes and PALM2-AKAP2 was annotated as a readthrough gene.
Form	Freeze-dried powder
Molecular Mass	Predicted Molecular Mass: 29.7 kDa Accurate Molecular Mass: 44 kDa
Purity	> 90%

 Tel: 1-631-559-9269 1-516-512-3133

 Email: info@creative-biomart.com  Fax: 1-631-938-8127

 45-1 Ramsey Road, Shirley, NY 11967, USA

Applications	Positive Control; Immunogen; SDS-PAGE; WB.
Stability	The thermal stability is described by the loss rate. The loss rate was determined by accelerated thermal degradation test, that is, incubate the protein at 37 centigrade for 48h, and no obvious degradation and precipitation were observed. The loss rate is less than 5% within the expiration date under appropriate storage condition.
Storage	Avoid repeated freeze/thaw cycles. Store at 2-8 centigrade for one month. Aliquot and store at -80 centigrade for 12 months.
Storage Buffer	PBS, pH7.4, containing 0.01% SKL, 1 mM DTT, 5% Trehalose and Proclin300.
Reconstitution	Reconstitute in sterile water to a concentration of 0.1-1.0 mg/mL. Do not vortex.

GENE INFORMATION

Gene Name	AKAP2 A kinase (PRKA) anchor protein 2 [Homo sapiens (human)]
Official Symbol	AKAP2
Synonyms	AKAP2; A kinase (PRKA) anchor protein 2; PRKA2; A-kinase anchor protein 2; AKAP KL; DKFZp564L0716; KIAA0920; protein kinase A2; protein kinase A anchoring protein 2; AKAP-2; AKAPKL; FLJ53197; FLJ98336
Gene ID	445815
mRNA Refseq	NM_001004065
Protein Refseq	NP_001004065
MIM	604582

 Tel: 1-631-559-9269 1-516-512-3133

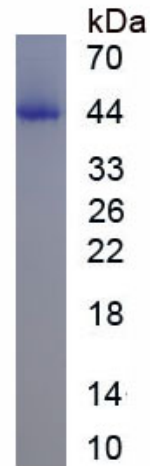
 Email: info@creative-biomart.com  Fax: 1-631-938-8127

 45-1 Ramsey Road, Shirley, NY 11967, USA



UniProt ID

Q9Y2D5



Tel: 1-631-559-9269 1-516-512-3133

Email: info@creative-biomart.com Fax: 1-631-938-8127

45-1 Ramsey Road, Shirley, NY 11967, USA