

Recombinant Human AKAP7 Protein, MYC/DDK-tagged, C13 and N15-labeled

Cat. No. AKAP7-101H **Lot. No.** (See product label)

SPECIFICATION

Product Overview	AKAP7 MS Standard C13 and N15-labeled recombinant protein (NP_004833) with a C-terminal MYC/DDK tag, was expressed in HEK293 cells.
Species	Human
Source	HEK293
Description	This gene encodes a member of the A-kinase anchoring protein (AKAP) family, a group of functionally related proteins that bind to a regulatory subunit (RII) of cAMP-dependent protein kinase A (PKA) and target the enzyme to specific subcellular compartments. AKAPs have a common RII-binding domain, but contain different targeting motifs responsible for directing PKA to distinct intracellular locations. Three alternatively spliced transcript variants encoding different isoforms have been described.
Molecular Mass	8.8 kDa
AA Sequence	MGQLCCFPFSRDEGKISEKNGGEPDDAELVRLSKRLVENAVLKAVQQYLEETQNK KPGEGSSVKTEAADQNGNDNENNRKTRTRPLEQKLISEEDLAANDILDYKDDDDKV
Purity	> 80% as determined by SDS-PAGE and Coomassie blue staining
Stability	Stable for 3 months from receipt of products under proper storage and handling conditions.

 Tel: 1-631-559-9269 1-516-512-3133

 Email: info@creative-biomart.com  Fax: 1-631-938-8127

 45-1 Ramsey Road, Shirley, NY 11967, USA

Storage Store at -80 centigrade. Avoid repeated freeze-thaw cycles.

Concentration 50 µg/mL as determined by BCA

Storage Buffer 100 mM glycine, 25 mM Tris-HCl, pH 7.3.

GENE INFORMATION

Gene Name AKAP7 A-kinase anchoring protein 7 [Homo sapiens (human)]

Official Symbol AKAP7

Synonyms AKAP7; A-kinase anchoring protein 7; AKAP15; AKAP18; A-kinase anchoring protein 7; A kinase (PRKA) anchor protein 7; A-kinase anchor protein 18 kDa; A-kinase anchor protein 9 kDa; AKAP 18

Gene ID 9465

mRNA Refseq NM_004842

Protein Refseq NP_004833

MIM 604693

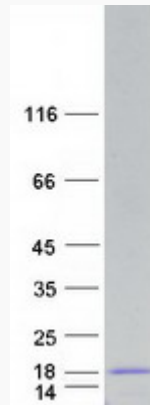
UniProt ID O43687

 Tel: 1-631-559-9269 1-516-512-3133

 Email: info@creative-biomart.com  Fax: 1-631-938-8127

 45-1 Ramsey Road, Shirley, NY 11967, USA

SDS-PAGE



 Tel: 1-631-559-9269 1-516-512-3133

 Email: info@creative-biomart.com  Fax: 1-631-938-8127

 45-1 Ramsey Road, Shirley, NY 11967, USA