

Recombinant Human AKAP7 Protein, GST-tagged

Cat. No. AKAP7-402H **Lot. No.** (See product label)

SPECIFICATION

Product Overview	Human AKAP7 full-length ORF (AAH16927, 1 a.a. - 81 a.a.) recombinant protein with GST-tag at N-terminal.
Species	Human
Source	Wheat Germ
Description	This gene encodes a member of the A-kinase anchoring protein (AKAP) family, a group of functionally related proteins that bind to a regulatory subunit (RII) of cAMP-dependent protein kinase A (PKA) and target the enzyme to specific subcellular compartments. AKAPs have a common RII-binding domain, but contain different targeting motifs responsible for directing PKA to distinct intracellular locations. Three alternatively spliced transcript variants encoding different isoforms have been described.[provided by RefSeq, Apr 2011]
Molecular Mass	34.65 kDa
AA Sequence	MGQLCCFPFSRDEGKISEKNGGEPDDAELVRLSKRLVENAVLKAVQQYLEETQKNK KPGEGSSVKTEAADQNGNDNENNRK
Applications	Enzyme-linked Immunoabsorbent Assay; Western Blot (Recombinant protein); Antibody Production; Protein Array
Notes	Best use within three months from the date of receipt of this protein.

 Tel: 1-631-559-9269 1-516-512-3133

 Email: info@creative-biomart.com  Fax: 1-631-938-8127

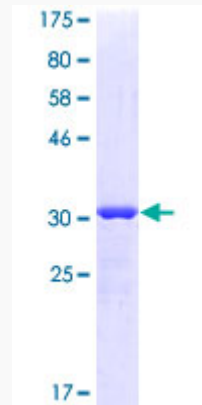
 45-1 Ramsey Road, Shirley, NY 11967, USA

Storage	Store at -80 centigrade. Aliquot to avoid repeated freezing and thawing.
Storage Buffer	50 mM Tris-HCl, 10 mM reduced Glutathione, pH=8.0 in the elution buffer.
GENE INFORMATION	
Gene Name	AKAP7 A kinase (PRKA) anchor protein 7 [Homo sapiens]
Official Symbol	AKAP7
Synonyms	AKAP7; A kinase (PRKA) anchor protein 7; A-kinase anchor protein 7 isoform gamma; AKAP15; AKAP18; AKAP 18; PRKA7 isoform gamma; AKAP-7 isoform gamma; PRKA7 isoforms alpha/beta; A-kinase anchor protein 9 kDa; A-kinase anchor protein 18 kDa; AKAP-7 isoforms alpha and beta; A-kinase anchor protein 7 isoforms alpha and beta;
Gene ID	9465
mRNA Refseq	NM_004842
Protein Refseq	NP_004833
MIM	604693
UniProt ID	O43687

 Tel: 1-631-559-9269 1-516-512-3133

 Email: info@creative-biomart.com  Fax: 1-631-938-8127

 45-1 Ramsey Road, Shirley, NY 11967, USA



12.5% SDS-PAGE Stained with Coomassie Blue.

 Tel: 1-631-559-9269 1-516-512-3133

 Email: info@creative-biomart.com  Fax: 1-631-938-8127

 45-1 Ramsey Road, Shirley, NY 11967, USA