

Recombinant Human AKIRIN2 Protein, GST-Tagged

Cat. No. AKIRIN2-0011H **Lot. No.** (See product label)

SPECIFICATION

Product Overview	Human C6orf166 full-length ORF (AAH00764, 1 a.a. - 203 a.a.) recombinant protein with GST-tag at N-terminal.
Species	Human
Source	Wheat Germ
Description	AKIRIN2 (Akirin 2) is a Protein Coding gene. GO annotations related to this gene include enzyme binding. An important paralog of this gene is AKIRIN1.
Molecular Mass	48.07 kDa
AA Sequence	MACGATLKRTLDFDPLLSPASPKRRRCAPLSAPTSAAASPLSAAAATAASFSAASAAS PQKYLRMEPSPFGDVSSRLTTEQILYNIKQEYKRMQKRRHLETFSFQQTDPCCCTSDA QPHAFLLSGPASPGETSSAASSPLKKEQPLFTLRQVGMICERLLKEREKVVREEYEEIL NTKLAEQYDAFVKFTHDQIMRRYGEQPASYVS
Applications	Enzyme-linked Immunoabsorbent Assay Western Blot (Recombinant protein) Antibody Production Protein Array
Notes	Best use within three months from the date of receipt of this protein.
Storage	Store at -80 centigrade. Aliquot to avoid repeated freezing and thawing.

 Tel: 1-631-559-9269 1-516-512-3133

 Email: info@creative-biomart.com  Fax: 1-631-938-8127

 45-1 Ramsey Road, Shirley, NY 11967, USA

Storage Buffer 50 mM Tris-HCl, 10 mM reduced Glutathione, pH=8.0 in the elution buffer.

GENE INFORMATION

Gene Name AKIRIN2 akirin 2 [Homo sapiens]

Official Symbol AKIRIN2

Synonyms AKIRIN2; akirin 2; C6orf166, chromosome 6 open reading frame 166; akirin-2; dJ486L4.2; FLJ10342; fourteen-three-three beta interactant 1; FBI1; C6orf166;

Gene ID 55122

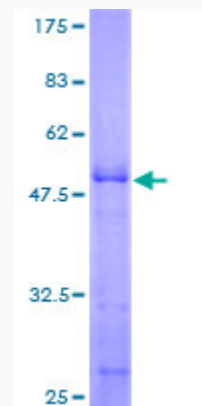
mRNA Refseq NM_018064

Protein Refseq NP_060534

MIM 615165

UniProt ID Q53H80

Quality Control Testing



 Tel: 1-631-559-9269 1-516-512-3133

 Email: info@creative-biomart.com  Fax: 1-631-938-8127

 45-1 Ramsey Road, Shirley, NY 11967, USA



12.5% SDS-PAGE Stained with Coomassie Blue.

 Tel: 1-631-559-9269 1-516-512-3133

 Email: info@creative-biomart.com  Fax: 1-631-938-8127

 45-1 Ramsey Road, Shirley, NY 11967, USA