

Recombinant Human AKIRIN2 Protein, Myc/DDK-tagged, C13 and N15-labeled

Cat. No. AKIRIN2-2312H **Lot. No.** (See product label)

SPECIFICATION

Product Overview	AKIRIN2 MS Standard C13 and N15-labeled recombinant protein (NP_060534) with a C-terminal MYC/DDK tag, was expressed in HEK293 cells.
Species	Human
Source	HEK293
Description	Required for the innate immune response. Downstream effector of the Toll-like receptor (TLR), TNF and IL-1 beta signaling pathways leading to the production of IL-6. Forms a complex with YWHAB that acts to repress transcription of DUSP1.
Molecular Mass	22.5 kDa
AA Sequence	MACGATLKRTLDFDPLLSPASPKRRRCAPLSAPTSAAASPLSAAAATAASFSAASAAS PQKYLRMEPSPFGDVSSRLTTEQILYNIKQEYKRMQKRRHLETSFQQTDPCCCTSDA QPHAFLLSGPASPGETSSAASSPLKKEQPLFTRQVGMICERLLKEREKVVREEYEEIL NTKLAEQYDAFVKFTHDQIMRRYGEQPASYVSTRTRPLEQKLISEEDLAANDILDYK DDDDKV
Purity	> 80% as determined by SDS-PAGE and Coomassie blue staining
Stability	Stable for 3 months from receipt of products under proper storage and handling conditions.

 Tel: 1-631-559-9269 1-516-512-3133

 Email: info@creative-biomart.com  Fax: 1-631-938-8127

 45-1 Ramsey Road, Shirley, NY 11967, USA

Storage	Store at -80 centigrade. Avoid repeated freeze-thaw cycles.
----------------	---

Concentration	50 µg/mL as determined by BCA
----------------------	-------------------------------

Storage Buffer	100 mM glycine, 25 mM Tris-HCl, pH 7.3.
-----------------------	---

GENE INFORMATION

Gene Name	AKIRIN2 akirin 2 [Homo sapiens (human)]
------------------	---

Official Symbol	AKIRIN2
------------------------	---------

Synonyms	AKIRIN2; akirin 2; C6orf166, chromosome 6 open reading frame 166; akirin-2; dJ486L4.2; FLJ10342; fourteen-three-three beta interactant 1; FBI1; C6orf166;
-----------------	---

Gene ID	55122
----------------	-------

mRNA Refseq	NM_018064
--------------------	-----------

Protein Refseq	NP_060534
-----------------------	-----------

MIM	615165
------------	--------

UniProt ID	Q53H80
-------------------	--------

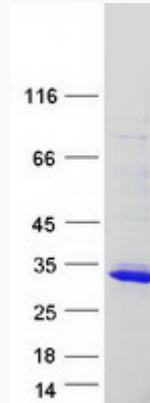
 Tel: 1-631-559-9269 1-516-512-3133

 Email: info@creative-biomart.com  Fax: 1-631-938-8127

 45-1 Ramsey Road, Shirley, NY 11967, USA



SDS-PAGE



Tel: 1-631-559-9269 1-516-512-3133

Email: info@creative-biomart.com Fax: 1-631-938-8127

45-1 Ramsey Road, Shirley, NY 11967, USA