

# Recombinant Full Length Human AKR1A1 Protein, C-Flag-tagged

**Cat. No.** AKR1A1-626HFL    **Lot. No.** (See product label)

## SPECIFICATION

### Product Overview

Recombinant Full Length Human AKR1A1 Protein, fused to Flag-tag at C-terminus, was expressed in Mammalian cells.

### Species

Human

### Source

Mammalian Cells

### Description

This gene encodes a member of the aldo/keto reductase superfamily, which consists of more than 40 known enzymes and proteins. This member, also known as aldehyde reductase, is involved in the reduction of biogenic and xenobiotic aldehydes and is present in virtually every tissue. Multiple alternatively spliced transcript variants of this gene exist, all encoding the same protein.

### Form

25 mM Tris HCl, pH 7.3, 100 mM glycine, 10% glycerol.

### Molecular Mass


36.4 kDa

### AA Sequence

MAASCVLLHTGQKMPLIGLGTWKSEPGQVKA AVKYALSVGYRHIDCAA IYGNEPEIG  
EALKEDVGP GKAV PREELFVTSK LWN TKHHPEDVEPALRKT LADLQLEYLDLYLMH  
WPYAFERGDN PFPKNADGTICYDSTHY KETWKALEALVAKGLVQALGLSNFNSRQI  
DDILSVASVRPAVLQVECHPYLAQNELIAHCQARGLEVTAY SPLGSSDRAWWRDPDE  
PVLLEEPVVLALAEKYGRSPAQILLRWQVQRKVICIPKSITPSRILQNIKVFDFDFT  
FSPEEMKQLNALNKNWRYIVPMLTVDGKRVPRDAGHPLYPFNDPYTRTRPLEQKLI  
SEEDLAANDILDYKDDDDKV

 Tel: 1-631-559-9269    1-516-512-3133

 Email: [info@creative-biomart.com](mailto:info@creative-biomart.com)     Fax: 1-631-938-8127

 45-1 Ramsey Road, Shirley, NY 11967, USA

<b>Purity</b>	> 80% as determined by SDS-PAGE and Coomassie blue staining.
<b>Stability</b>	Stable for 12 months from the date of receipt of the product under proper storage and handling conditions. Avoid repeated freeze-thaw cycles.
<b>Storage</b>	Store at -80 centigrade.
<b>Concentration</b>	>50 ug/mL as determined by microplate BCA method.
<b>Preparation</b>	Recombinant protein was captured through anti-DDK affinity column followed by conventional chromatography steps.
<b>Protein Families</b>	Druggable Genome
<b>Protein Pathways</b>	Glycerolipid metabolism, Glycolysis / Gluconeogenesis, Metabolic pathways
<b>Full Length</b>	Full L.
<b>GENE INFORMATION</b>	
<b>Gene Name</b>	<a href="#">AKR1A1</a> <a href="#">aldo-keto reductase family 1 member A1 [ Homo sapiens (human) ]</a>
<b>Official Symbol</b>	<a href="#">AKR1A1</a>
<b>Synonyms</b>	ALR; ARM; DD3; ALDR1; HEL-S-6
<b>Gene ID</b>	<a href="#">10327</a>
<b>mRNA Refseq</b>	<a href="#">NM_153326.3</a>
<b>Protein Refseq</b>	<a href="#">NP_697021.1</a>

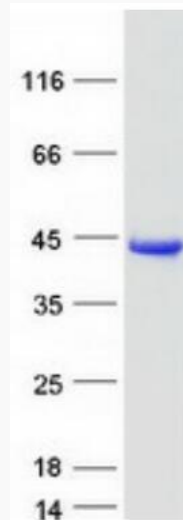
 Tel: 1-631-559-9269 1-516-512-3133

 Email: [info@creative-biomart.com](mailto:info@creative-biomart.com)  Fax: 1-631-938-8127

 45-1 Ramsey Road, Shirley, NY 11967, USA

**MIM** 103830

**UniProt ID** P14550



Coomassie blue staining of purified AKR1A1 protein.

 Tel: 1-631-559-9269 1-516-512-3133

 Email: [info@creative-biomart.com](mailto:info@creative-biomart.com)  Fax: 1-631-938-8127

 45-1 Ramsey Road, Shirley, NY 11967, USA