

Recombinant Full Length Human AKR1B1 Protein, C-Flag-tagged

Cat. No. AKR1B1-1172HFL **Lot. No.** (See product label)

SPECIFICATION

Product Overview	Recombinant Full Length Human AKR1B1 Protein, fused to Flag-tag at C-terminus, was expressed in Mammalian cells.
Species	Human
Source	Mammalian Cells
Description	This gene encodes a member of the aldo/keto reductase superfamily, which consists of more than 40 known enzymes and proteins. This member catalyzes the reduction of a number of aldehydes, including the aldehyde form of glucose, and is thereby implicated in the development of diabetic complications by catalyzing the reduction of glucose to sorbitol. Multiple pseudogenes have been identified for this gene. The nomenclature system used by the HUGO Gene Nomenclature Committee to define human aldo-keto reductase family members is known to differ from that used by the Mouse Genome Informatics database.
Form	25 mM Tris HCl, pH 7.3, 100 mM glycine, 10% glycerol.
Molecular Mass	35.7 kDa
AA Sequence	MASRLLLNGAKMPILGLGTWKSPPGQVTEAVKVAIDVGYRHIDCAHVYQNEVEVG VAIQEKLREQVVKR EELFIVSKLWCTYHEKGLVKGACQKTLSDLKLDYLDLYLIHWP TGFKPGKEFFPLDESGNVVPSDTNILD TWAAMEELVDEGLVKAIGISNFNHLQVEMI LNKPGLKYKPAVNQIECHPYLTQEKLIIQYCQSKGIVVTAY SPLGSPDRPWAKPEDPS

 Tel: 1-631-559-9269 1-516-512-3133

 Email: info@creative-biomart.com  Fax: 1-631-938-8127

 45-1 Ramsey Road, Shirley, NY 11967, USA



LLEDPRIKAIIAAKHNKTTAQVLIRFPMQRNLVVIPKSVTPERIAENFKVDFE
LSSQDMTLLSYNRNWRVCALLSCTSHKDYPFHEEFTRTRPLEQKLISEEDLAANDIL
DYKDDDDKV

Purity > 80% as determined by SDS-PAGE and Coomassie blue staining.

Stability Stable for 12 months from the date of receipt of the product under proper storage and handling conditions. Avoid repeated freeze-thaw cycles.

Storage Store at -80 centigrade.

Concentration >50 ug/mL as determined by microplate BCA method.

Preparation Recombinant protein was captured through anti-DDK affinity column followed by conventional chromatography steps.

Protein Families Druggable Genome

Protein Pathways Fructose and mannose metabolism, Galactose metabolism, Glycerolipid metabolism, Metabolic pathways, Pentose and glucuronate interconversions, Pyruvate metabolism

Full Length Full L.

GENE INFORMATION

Gene Name AKR1B1 aldo-keto reductase family 1 member B [Homo sapiens (human)]

Official Symbol AKR1B1

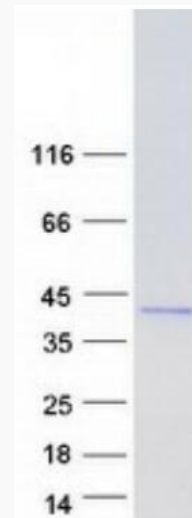
Synonyms AR; ADR; ALR2; ALDR1

Tel: 1-631-559-9269 1-516-512-3133

Email: info@creative-biomart.com Fax: 1-631-938-8127

45-1 Ramsey Road, Shirley, NY 11967, USA

Gene ID	231
mRNA Refseq	NM_001628.4
Protein Refseq	NP_001619.1
MIM	103880
UniProt ID	P15121



Coomassie blue staining of purified AKR1B1 protein.

Tel: 1-631-559-9269 1-516-512-3133

Email: info@creative-biomart.com Fax: 1-631-938-8127

45-1 Ramsey Road, Shirley, NY 11967, USA