

Recombinant Human AKR1B1 Protein, Myc/DDK-tagged, C13 and N15-labeled

Cat. No. AKR1B1-3168H **Lot. No.** (See product label)

SPECIFICATION

Product Overview	AKR1B1 MS Standard C13 and N15-labeled recombinant protein (NP_001619) with a C-terminal MYC/DDK tag, was expressed in HEK293 cells.
Species	Human
Source	HEK293
Description	This gene encodes a member of the aldo/keto reductase superfamily, which consists of more than 40 known enzymes and proteins. This member catalyzes the reduction of a number of aldehydes, including the aldehyde form of glucose, and is thereby implicated in the development of diabetic complications by catalyzing the reduction of glucose to sorbitol. Multiple pseudogenes have been identified for this gene. The nomenclature system used by the HUGO Gene Nomenclature Committee to define human aldo-keto reductase family members is known to differ from that used by the Mouse Genome Informatics database.
Molecular Mass	35.7 kDa
AA Sequence	MASRLLLNGAKMPILGLGTWKSPPGQVTEAVKVAIDVGYRHIDCAHVYQNEVEVG VAIQEKLREQVVKREELFIVSKLWCTYHEKGLVKGACQKTLSDLKLDYLDLYLIHWPT GFKPGKEFFPLDESGNVVPSDTNILDWAAMEELVDEGLVKAIGISNFNHLQVEMILN KPGLKYKPAVNQIECHPYLTQEKLQYCSKGIIVTAYSPLGSPDRPWAKPEDPSLL EDPRIKAI AAKHNKTTAQLIRFPMQRNLVVIPKSVTPERIAENFKVDFELSSQDMTT

 Tel: 1-631-559-9269 1-516-512-3133

 Email: info@creative-biomart.com  Fax: 1-631-938-8127

 45-1 Ramsey Road, Shirley, NY 11967, USA

	LLSYNRNWRVCALLSCTSHKDYPFHEEFTRTRPLEQKLISEEDLAANDILDYKDDDD KV
Purity	> 80% as determined by SDS-PAGE and Coomassie blue staining
Stability	Stable for 3 months from receipt of products under proper storage and handling conditions.
Storage	Store at -80 centigrade. Avoid repeated freeze-thaw cycles.
Concentration	50 µg/mL as determined by BCA
Storage Buffer	100 mM glycine, 25 mM Tris-HCl, pH 7.3.

GENE INFORMATION

Gene Name	AKR1B1 aldo-keto reductase family 1 member B [Homo sapiens (human)]
Official Symbol	AKR1B1
Synonyms	AKR1B1; aldo-keto reductase family 1, member B1 (aldose reductase); ALDR1; aldose reductase; AR; aldehyde reductase 1; low Km aldose reductase; Li5-2 CTCL tumor antigen; aldo-keto reductase family 1 member B1; ADR; ALR2; MGC1804;
Gene ID	231
mRNA Refseq	NM_001628
Protein Refseq	NP_001619
MIM	103880

 Tel: 1-631-559-9269 1-516-512-3133

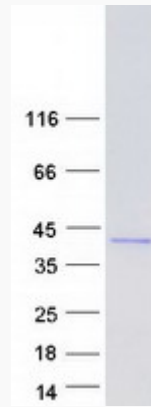
 Email: info@creative-biomart.com  Fax: 1-631-938-8127

 45-1 Ramsey Road, Shirley, NY 11967, USA

UniProt ID

P15121

SDS-PAGE



 Tel: 1-631-559-9269 1-516-512-3133

 Email: info@creative-biomart.com  Fax: 1-631-938-8127

 45-1 Ramsey Road, Shirley, NY 11967, USA