

Active Recombinant Human AKR1B1 Protein, His tagged

Cat. No. AKR1B1-9156H Lot. No. (See product label)

SPECIFICATION

Product Overview	Active Recombinant Human AKR1B1 Protein with His tag was expressed in E. coli.
Species	Human
Source	E.coli
ProteinLength	1-316 aa
Description	<p>This gene encodes a member of the aldo/keto reductase superfamily, which consists of more than 40 known enzymes and proteins. This member catalyzes the reduction of a number of aldehydes, including the aldehyde form of glucose, and is thereby implicated in the development of diabetic complications by catalyzing the reduction of glucose to sorbitol. Multiple pseudogenes have been identified for this gene. The nomenclature system used by the HUGO Gene Nomenclature Committee to define human aldo-keto reductase family members is known to differ from that used by the Mouse Genome Informatics database.</p>
AASequence	<p>MHHHHHHHHHDYKDDDDKMASRLLLNNGAKMPILGLGTWKSPPGQVTEAVKVAIDV GYRHIDCAHVYQNEVEVGVAIQEKLREQVVKREELFIVSKLWCTYHEKGLVKGACQ KTLSDLKLDYLDLYLIHWPTGFKPGKEFFPLDESGNVVPSDTNILDWAAMEELVDE GLVKAIGISNFNHLQVEMILNKPLKYPKPAVNQIECHPYLTQEKLIQYCQSKGIVVTAY SPLGSPDRPWAKPEDPSLLEDPRIKAIAAKHNKTTAQVLIRFPMQRNLVVIPKSVTPE RIAENFKVDFDFELSSQDMTLLSYNRNWRVCALLSCTSHKDYPFHEEF</p>
Molecular Mass	38 kDa

 Tel: 1-631-559-9269 1-516-512-3133

 Email: info@creative-biomart.com  Fax: 1-631-938-8127

 45-1 Ramsey Road, Shirley, NY 11967, USA

Bio-activity	Specific activity: 1.2 units/mg. Enzymatic activity was confirmed by measuring the amount of enzyme catalyzing the oxidation of 1 micromole NADPH/min at 25 centigrade. Specific activity was expressed in units/mg of protein.
Endotoxin	< 1 EU/μg by LAL
Purity	> 95% by SDS-PAGE
Storage	Store it under sterile conditions at -20 to -80 centigrade. It is recommended that the protein be aliquoted for optimal storage. Avoid repeated freeze-thaw cycles.
Storage Buffer	Sterile 20mM Tris, 1mM DTT, 10% Glycerol, pH8.0
Concentration	1 mg/mL by Bradford

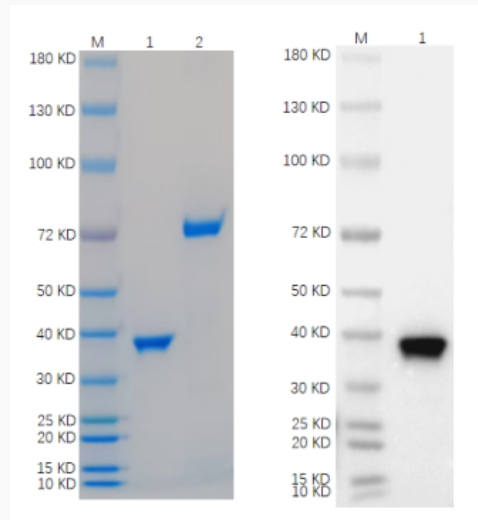
GENE INFORMATION

Gene Name	AKR1B1 aldo-keto reductase family 1, member B1 (aldose reductase) [Homo sapiens (human)]
Official Symbol	AKR1B1
Synonyms	AKR1B1; aldo-keto reductase family 1, member B1 (aldose reductase); ALDR1; aldose reductase; AR; aldehyde reductase 1; low Km aldose reductase; Lii5-2 CTCL tumor antigen; aldo-keto reductase family 1 member B1; ADR; ALR2; MGC1804
Gene ID	231
mRNA Refseq	NM_001628
Protein Refseq	NP_001619

 Tel: 1-631-559-9269 1-516-512-3133

 Email: info@creative-biomart.com  Fax: 1-631-938-8127

 45-1 Ramsey Road, Shirley, NY 11967, USA

MIM 103880**UniProt ID** P15121**SDS-PAGE and WB**

Reducing 4%-20% SDS-PAGE (CBB stained) and WB (Anti-His Mouse Monoclonal antibody) analysis profiles of purified AKR1B1. 1. AKR1B1: 1 μ g 2. BSA: 1 μ g

 Tel: 1-631-559-9269 1-516-512-3133 Email: info@creative-biomart.com  Fax: 1-631-938-8127 45-1 Ramsey Road, Shirley, NY 11967, USA