

Recombinant Human AKT1S1 Protein, Tag Free

Cat. No. AKT1S1-13H **Lot. No.** (See product label)

SPECIFICATION

Product Overview	Recombinant human AKT1 substrate 1 Protein (119-256aa) without tag was expressed in E. coli.
Species	Human
Source	E.coli
ProteinLength	119-256aa
Description	AKT1S1 is a proline-rich substrate of AKT (MIM 164730) that binds 14-3-3 protein (see YWHAH, MIM 113508) when phosphorylated.
Tag	Non
Molecular Mass	15.1 kDa
AA Sequence	MQLGISDNGGLFVMDLQDLPPFCESDPESTDDGSLSEETPAGPPTCSVPPAS ALPTQQYAKSLPVSVPVWGFKEKRTEARSSDEENGPPSSPDLDRIAASMRALVLR AEDTQVFGDLPRPRLNTSDFQKLKRKY
Endotoxin	< 1 EU/μg by LAL
Purity	> 85% by SDS-PAGE
Storage	Store it under sterile conditions at -20 to -80 centigrade. It is recommended that the

 Tel: 1-631-559-9269 1-516-512-3133

 Email: info@creative-biomart.com  Fax: 1-631-938-8127

 45-1 Ramsey Road, Shirley, NY 11967, USA

protein be aliquoted for optimal storage. Avoid repeated freeze-thaw cycles.

Storage Buffer Sterile PBS, pH 7.4

Concentration 1.0 mg/mL

GENE INFORMATION

Gene Name [AKT1S1 AKT1 substrate 1 \[Homo sapiens \(human\) \]](#)

Official Symbol [AKT1S1](#)

Synonyms AKT1S1; AKT1 substrate 1 (proline-rich); proline-rich AKT1 substrate 1; Lobe; MGC2865; PRAS40; proline rich Akt substrate; 40 kDa; 40 kDa proline-rich AKT substrate; proline-rich Akt substrate, 40 kDa;

Gene ID [84335](#)

mRNA Refseq [NM_001098632](#)

Protein Refseq [NP_001092102](#)

MIM [610221](#)

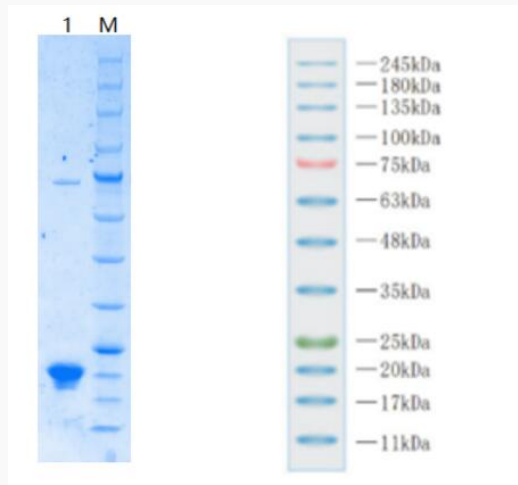
UniProt ID [Q96B36](#)

 Tel: 1-631-559-9269 1-516-512-3133

 Email: info@creative-biomart.com  Fax: 1-631-938-8127

 45-1 Ramsey Road, Shirley, NY 11967, USA

SDS-PAGE



 Tel: 1-631-559-9269 1-516-512-3133

 Email: info@creative-biomart.com  Fax: 1-631-938-8127

 45-1 Ramsey Road, Shirley, NY 11967, USA