

Recombinant Human AKT1S1 Protein, Myc/DDK-tagged, C13 and N15-labeled

Cat. No. AKT1S1-4083H **Lot. No.** (See product label)

SPECIFICATION

Product Overview	AKT1S1 MS Standard C13 and N15-labeled recombinant protein (NP_001092102) with a C-terminal MYC/DDK tag, was expressed in HEK293 cells.
Species	Human
Source	HEK293
Description	AKT1S1 is a proline-rich substrate of AKT that binds 14-3-3 protein when phosphorylated.
Molecular Mass	27.2 kDa
AA Sequence	MASGRPEELWEAVVGAAERFRARTGTELVLLTAAPPPPPRPGPCAYAAHGRGALA EAARRCLHDIALAHRAATAARPPAPPAPQPPSPTPSPRPTLAREDNEEDEDEPTE TETSQEQLGISDNGGLFVMDEDATLQDLPPFCESDPESTDDGSLSEETPAGPPTCS VPPASALPTQQYAKSLPVSVPVWGFKEKRTEARSSDEENGPPSSPDLRIAASMRA LVLREAEDTQVFGDLPRPRLNTSDFQKLKRKYTRTRPLEQKLISEEDLAANDILDYKD DDDKV
Purity	> 80% as determined by SDS-PAGE and Coomassie blue staining
Stability	Stable for 3 months from receipt of products under proper storage and handling conditions.

 Tel: 1-631-559-9269 1-516-512-3133

 Email: info@creative-biomart.com  Fax: 1-631-938-8127

 45-1 Ramsey Road, Shirley, NY 11967, USA

Storage	Store at -80 centigrade. Avoid repeated freeze-thaw cycles.
Concentration	50 µg/mL as determined by BCA
Storage Buffer	100 mM glycine, 25 mM Tris-HCl, pH 7.3.
GENE INFORMATION	
Gene Name	AKT1S1 AKT1 substrate 1 [Homo sapiens (human)]
Official Symbol	AKT1S1
Synonyms	AKT1S1; AKT1 substrate 1 (proline-rich); proline-rich AKT1 substrate 1; Lobe; MGC2865; PRAS40; proline rich Akt substrate; 40 kDa; 40 kDa proline-rich AKT substrate; proline-rich Akt substrate, 40 kDa;
Gene ID	84335
mRNA Refseq	NM_001098632
Protein Refseq	NP_001092102
MIM	610221
UniProt ID	Q96B36

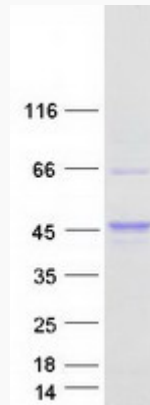
 Tel: 1-631-559-9269 1-516-512-3133

 Email: info@creative-biomart.com  Fax: 1-631-938-8127

 45-1 Ramsey Road, Shirley, NY 11967, USA



SDS-PAGE



Tel: 1-631-559-9269 1-516-512-3133

Email: info@creative-biomart.com Fax: 1-631-938-8127

45-1 Ramsey Road, Shirley, NY 11967, USA