

Active Recombinant Human AKT2 Protein, GST-His tagged

Cat. No. AKT2-424H **Lot. No.** (See product label)

SPECIFICATION

Product Overview	Human AKT2 (NM_001626.2, 107 a.a. - 481 a.a.) partial recombinant protein with GST-His tag expressed in Sf9 cells.
Species	Human
Source	Insect Cells
ProteinLength	107-481 a.a.
Description	This gene is a putative oncogene encoding a protein belonging to a subfamily of serine/threonine kinases containing SH2-like (Src homology 2-like) domains. The gene was shown to be amplified and overexpressed in 2 of 8 ovarian carcinoma cell lines and 2 of 15 primary ovarian tumors. Overexpression contributes to the malignant phenotype of a subset of human ductal pancreatic cancers. The encoded protein is a general protein kinase capable of phosphorylating several known proteins. [provided by RefSeq, Jul 2008]
Form	Liquid
Bio-activity	272 pmol/μg x min
Molecular Mass	72.844 kDa
Applications	Functional Study; SDS-PAGE

 Tel: 1-631-559-9269 1-516-512-3133

 Email: info@creative-biomart.com  Fax: 1-631-938-8127

 45-1 Ramsey Road, Shirley, NY 11967, USA

Storage	Store at -80 centigrade. Aliquot to avoid repeated freezing and thawing.
Concentration	0.367 ug/uL
Storage Buffer	In 50 mM Tris-HCl, 100 mM NaCl, pH 8.0. (5 mM DTT, 15 mM reduced glutathione, 20% glycerol)

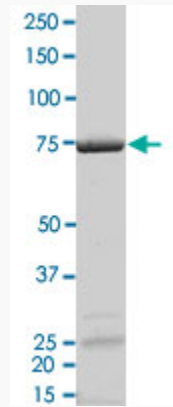
GENE INFORMATION

Gene Name	AKT2 v-akt murine thymoma viral oncogene homolog 2 [Homo sapiens]
Official Symbol	AKT2
Synonyms	AKT2; v-akt murine thymoma viral oncogene homolog 2; RAC-beta serine/threonine-protein kinase; PKB beta; RAC-PK-beta; protein kinase Akt-2; protein kinase B beta; rac protein kinase beta; murine thymoma viral (v-akt) homolog-2; PKBB; PRKBB; HIHGHH; PKBBETA; RAC-BETA;
Gene ID	208
mRNA Refseq	NM_001243027
Protein Refseq	NP_001229956
MIM	164731
UniProt ID	P31751

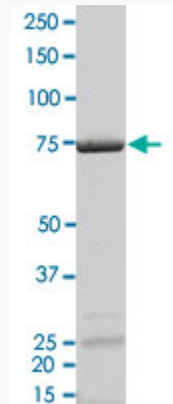
 Tel: 1-631-559-9269 1-516-512-3133

 Email: info@creative-biomart.com  Fax: 1-631-938-8127

 45-1 Ramsey Road, Shirley, NY 11967, USA



2 µg/lane SDS-PAGE Stained with Coomassie Blue



Result of activity analysis

 Tel: 1-631-559-9269 1-516-512-3133

 Email: info@creative-biomart.com  Fax: 1-631-938-8127

 45-1 Ramsey Road, Shirley, NY 11967, USA