

Active Recombinant Full Length Human AKT3 Protein, C-Flag-tagged

Cat. No. AKT3-424HFL Lot. No. (See product label)

SPECIFICATION

Product Overview	Recombinant Full Length Human AKT3 Protein, fused to Flag-tag at C-terminus, was expressed in Mammalian cells.
Species	Human
Source	Mammalian Cells
Description	The protein encoded by this gene is a member of the AKT, also called PKB, serine/threonine protein kinase family. AKT kinases are known to be regulators of cell signaling in response to insulin and growth factors. They are involved in a wide variety of biological processes including cell proliferation, differentiation, apoptosis, tumorigenesis, as well as glycogen synthesis and glucose uptake. This kinase has been shown to be stimulated by platelet-derived growth factor (PDGF), insulin, and insulin-like growth factor 1 (IGF1). Alternatively splice transcript variants encoding distinct isoforms have been described.
Form	25 mM Tris HCl, pH 7.3, 100 mM glycine, 10% glycerol.
Bio-activity	AKT3 activity verified in a biochemical assay: AKT3 (-akt murine thymoma viral oncogene homolog 3 (protein kinase B, gamma) activity was measured in a homogeneous time-resolved fluorescent (HTRF®) assay. AKT3 is a serine/threonine kinase that plays a key in regulating cell survival, insulin signaling, angiogenesis and tumor formation. Varying concentrations of AKT3 were added to a reaction mix

 Tel: 1-631-559-9269 1-516-512-3133

 Email: info@creative-biomart.com  Fax: 1-631-938-8127

 45-1 Ramsey Road, Shirley, NY 11967, USA

containing ATP and a biotinylated kinase substrate and the reaction mixture was incubated to allow the protein to phosphorylate the substrate. HTRF detection reagents were then added, and the time-resolved fluorescent signal was measured on a Flexstation 3 microplate reader. The time resolved fluorescent signal is expressed as “delta R” or “ΔR” and is a ratio calculated from the fluorescent emission intensities of the donor and acceptor fluors.

Molecular Mass 55.6 kDa

AA Sequence

MSDVTIVKEGWVQKRGEYIKNWRPRYFLLKTDGSGFIGYKEKPQDVDLPYPLNNFSV
 AKCQLMKTERPKPN TFIIRCLQWTTVIERTFHVDTPPEEREWEAIAQAVADRLQRQE
 EERMNCSPTSQIDNIGEEEMDASTHH KRKTMNDFDYLLKLGKGTFGKVLVREKA
 SGKYYAMKILKKEVIIAKDEVAHTLTESRVLKNTRHPFLTS LKYSFQTKDRLCFVMEY
 VNGGELFFHLSRERVFSEDRTRFYGAEIVSALDYLSHGKIVYRDLKLENLMLD KDGH
 IKITDFGLCKEGITDAATMKTFCGTPEYLAPEVLEDNDYGRAVDWWGLGVVMYEMM
 CGRLPFYNQD HEKLFELILMEDIKFPRTLSSDAKSLLSGLLIKDPNKRLGGGPDDAKE
 IMRHSFFSGVNWQDVYDKKLV
 PFKPQVTSETDTRYFDEEFTAQTITITPPEKYDEDGMDCMDNERRPHFPQFSYSAS
 GRETRTRPLEQKLISEEDLAANDILDYKDDDDKV

Purity > 80% as determined by SDS-PAGE and Coomassie blue staining.

Stability Stable for 12 months from the date of receipt of the product under proper storage and handling conditions. Avoid repeated freeze-thaw cycles.

Storage Store at -80 centigrade.

Concentration >50 ug/mL as determined by microplate BCA method.

Preparation Recombinant protein was captured through anti-DDK affinity column followed by

 Tel: 1-631-559-9269 1-516-512-3133

 Email: info@creative-biomart.com  Fax: 1-631-938-8127

 45-1 Ramsey Road, Shirley, NY 11967, USA

conventional chromatography steps.

Protein Families

Druggable Genome, ES Cell Differentiation/IPS, Protein Kinase

Protein Pathways

Acute myeloid leukemia, Adipocytokine signaling pathway, Apoptosis, B cell receptor signaling pathway, Chemokine signaling pathway, Chronic myeloid leukemia, Colorectal cancer, Endometrial cancer, ErbB signaling pathway, Fc epsilon RI signaling pathway, Fc gamma R-mediated phagocytosis, Focal adhesion, Glioma, Insulin signaling pathway, Jak-STAT signaling pathway, MAPK signaling pathway, Melanoma, mTOR signaling pathway, Neurotrophin signaling pathway, Non-small cell lung cancer, Pancreatic cancer, Pathways in cancer, Progesterone-mediated oocyte maturation, Prostate cancer, Renal cell carcinoma, Small cell lung cancer, T cell receptor signaling pathway, Tight junction, Toll-like receptor signaling pathway, VEGF signaling pathway

Full Length

Full L.

GENE INFORMATION

Gene Name

[AKT3 AKT serine/threonine kinase 3 \[Homo sapiens \(human\) \]](#)

Official Symbol

[AKT3](#)

Synonyms

MPPH; PKBG; MPPH2; PRKBG; STK-2; PKB-GAMMA; RAC-gamma; RAC-PK-gamma

Gene ID

[10000](#)

mRNA Refseq


[NM_005465.7](#)

Protein Refseq

[NP_005456.1](#)

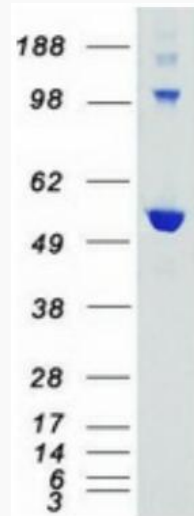
 Tel: 1-631-559-9269 1-516-512-3133

 Email: info@creative-biomart.com  Fax: 1-631-938-8127


 45-1 Ramsey Road, Shirley, NY 11967, USA

MIM 611223

UniProt ID Q9Y243



Coomassie blue staining of purified AKT3 protein.

 Tel: 1-631-559-9269 1-516-512-3133

 Email: info@creative-biomart.com  Fax: 1-631-938-8127

 45-1 Ramsey Road, Shirley, NY 11967, USA