

## Recombinant Human ALAD Protein, GST-tagged

**Cat. No.** ALAD-428H    **Lot. No.** (See product label)

### SPECIFICATION

<b>Product Overview</b>	Human ALAD full-length ORF ( NP_000022.2, 1 a.a. - 339 a.a.) recombinant protein with GST-tag at N-terminal.
<b>Species</b>	Human
<b>Source</b>	Wheat Germ
<b>Description</b>	The ALAD enzyme is composed of 8 identical subunits and catalyzes the condensation of 2 molecules of delta-aminolevulinate to form porphobilinogen (a precursor of heme, cytochromes and other hemoproteins). ALAD catalyzes the second step in the porphyrin and heme biosynthetic pathway; zinc is essential for enzymatic activity. ALAD enzymatic activity is inhibited by lead and a defect in the ALAD structural gene can cause increased sensitivity to lead poisoning and acute hepatic porphyria. Alternative splicing of this gene results in multiple transcript variants encoding different isoforms. [provided by RefSeq, Dec 2015]
<b>Molecular Mass</b>	63.6 kDa
<b>AA Sequence</b>	MPLCPLAHAMQPQSVLHSGYFHPLLRWQTATTTLNASNLIYPIFVTDVDPDDIQPITS LPGVARYGVKRLEEMLRPLVEEGLRCVLIFGVPSRVPKDERGSAADSEESPAIEAIHL LRKTFPNLLVACDVCLCPYTSHGHCGLLSENGAFRAEESRQLAEVALAYAKAGCQ VVAPSDMMDGRVEAIKEALMAHGLGNRVSVMSYSAKFASCFYGPFRDAAKSSPAF GDRRCYQLPPGARGLALRAVDRDREGADMLMVKPGMPYLDIVREVKDKHPDLPL AVYHVSGEFAMLWHGAQAGAFDLKAAVLEAMTAFRRAGADIIITYYTPQLLQWLKEE

 Tel: 1-631-559-9269    1-516-512-3133

 Email: [info@creative-biomart.com](mailto:info@creative-biomart.com)     Fax: 1-631-938-8127

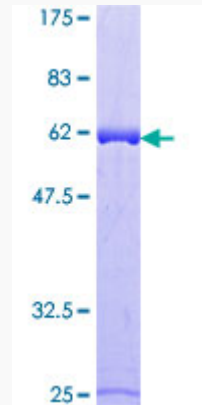
 45-1 Ramsey Road, Shirley, NY 11967, USA

<b>Applications</b>	Enzyme-linked Immunoabsorbent Assay; Western Blot (Recombinant protein); Antibody Production; Protein Array
<b>Notes</b>	Best use within three months from the date of receipt of this protein.
<b>Storage</b>	Store at -80 centigrade. Aliquot to avoid repeated freezing and thawing.
<b>Storage Buffer</b>	50 mM Tris-HCl, 10 mM reduced Glutathione, pH=8.0 in the elution buffer.
<b>GENE INFORMATION</b>	
<b>Gene Name</b>	ALAD aminolevulinate dehydratase [ Homo sapiens ]
<b>Official Symbol</b>	ALAD
<b>Synonyms</b>	ALAD; aminolevulinate dehydratase; aminolevulinate, delta , dehydratase; delta-aminolevulinic acid dehydratase; ALADH; PBGS; porphobilinogen synthase; aminolevulinate, delta-, dehydratase; MGC5057;
<b>Gene ID</b>	210
<b>mRNA Refseq</b>	NM_000031
<b>Protein Refseq</b>	NP_000022
<b>MIM</b>	125270
<b>UniProt ID</b>	P13716

 Tel: 1-631-559-9269 1-516-512-3133

 Email: [info@creative-biomart.com](mailto:info@creative-biomart.com)  Fax: 1-631-938-8127

 45-1 Ramsey Road, Shirley, NY 11967, USA



12.5% SDS-PAGE Stained with Coomassie Blue.

 Tel: 1-631-559-9269 1-516-512-3133

 Email: [info@creative-biomart.com](mailto:info@creative-biomart.com)  Fax: 1-631-938-8127

 45-1 Ramsey Road, Shirley, NY 11967, USA