

# Recombinant Human ALAD Protein, Myc/DDK-tagged, C13 and N15-labeled

**Cat. No.** ALAD-6108H    **Lot. No.** (See product label)

## SPECIFICATION

<b>Product Overview</b>	ALAD MS Standard C13 and N15-labeled recombinant protein (NP_000022) with a C-terminal MYC/DDK tag, was expressed in HEK293 cells.
<b>Species</b>	Human
<b>Source</b>	HEK293
<b>Description</b>	The ALAD enzyme is composed of 8 identical subunits and catalyzes the condensation of 2 molecules of delta-aminolevulinate to form porphobilinogen (a precursor of heme, cytochromes and other hemoproteins). ALAD catalyzes the second step in the porphyrin and heme biosynthetic pathway; zinc is essential for enzymatic activity. ALAD enzymatic activity is inhibited by lead and a defect in the ALAD structural gene can cause increased sensitivity to lead poisoning and acute hepatic porphyria. Alternative splicing of this gene results in multiple transcript variants encoding different isoforms.
<b>Molecular Mass</b>	37.23 kDa
<b>AA Sequence</b>	MPLCPLAHAMQPQSVLHSGYFHPLLRWQTATTTLNASNLIYPIFVTDVPDDIQPITS LPGVARYGVKRLEEMLRPLVEEGLRCLIFGVPSRVPKDERGSAADSEESPAIEAIHL LRKTFPNLLVACDVCLCPYTSHGHCGLLSENGAFRAEESRQLAEVALAYAKAGCQ VVAPSDMMDGRVEAIKEALMAHGLGNRVSVMSYSAKFASCFYGPFRDAAKSSPAF GDRRCYQLPPGARGLALRAVDRDVREGADMLMVKPGMPYLDIVREVKDKHPDLPL

 Tel: 1-631-559-9269    1-516-512-3133

 Email: [info@creative-biomart.com](mailto:info@creative-biomart.com)     Fax: 1-631-938-8127

 45-1 Ramsey Road, Shirley, NY 11967, USA

AVYHVSGEFAMLWHGAQAGAFDLKAAVLEAMTAFRRAGADIITYTPQLLQWLKEE  
SGPTRTRRLEQKLISEEDLAANDILDYKDDDDKV

**Purity** > 80% as determined by SDS-PAGE and Coomassie blue staining

**Stability** Stable for 3 months from receipt of products under proper storage and handling conditions.

**Storage** Store at -80 centigrade. Avoid repeated freeze-thaw cycles.

**Concentration** 50 µg/mL as determined by BCA

**Storage Buffer** 100 mM glycine, 25 mM Tris-HCl, pH 7.3.

## GENE INFORMATION

**Gene Name** [ALAD aminolevulinate dehydratase \[ Homo sapiens \(human\) \]](#)

**Official Symbol** [ALAD](#)

**Synonyms** ALAD; aminolevulinate dehydratase; aminolevulinate, delta, dehydratase; delta-aminolevulinic acid dehydratase; ALADH; PBGS; porphobilinogen synthase; aminolevulinate, delta-, dehydratase; MGC5057;

**Gene ID** [210](#)

**mRNA Refseq** [NM\\_000031](#)

**Protein Refseq** [NP\\_000022](#)

**MIM** [125270](#)

 Tel: 1-631-559-9269 1-516-512-3133

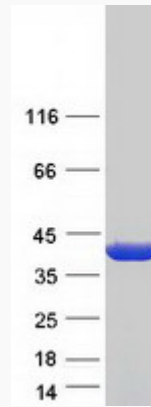
 Email: [info@creative-biomart.com](mailto:info@creative-biomart.com)  Fax: 1-631-938-8127

 45-1 Ramsey Road, Shirley, NY 11967, USA

UniProt ID

P13716

SDS-PAGE



 Tel: 1-631-559-9269 1-516-512-3133

 Email: [info@creative-biomart.com](mailto:info@creative-biomart.com)  Fax: 1-631-938-8127

 45-1 Ramsey Road, Shirley, NY 11967, USA