

## Recombinant Human ALAS1 Protein, GST-tagged

**Cat. No.** ALAS1-429H    **Lot. No.** (See product label)

### SPECIFICATION

<b>Product Overview</b>	Human ALAS1 partial ORF ( NP_000679, 1 a.a. - 98 a.a.) recombinant protein with GST-tag at N-terminal.
<b>Species</b>	Human
<b>Source</b>	Wheat Germ
<b>Description</b>	This gene encodes the mitochondrial enzyme which catalyzes the rate-limiting step in heme (iron-protoporphyrin) biosynthesis. The enzyme encoded by this gene is the housekeeping enzyme; a separate gene encodes a form of the enzyme that is specific for erythroid tissue. The level of the mature encoded protein is regulated by heme: high levels of heme down-regulate the mature enzyme in mitochondria while low heme levels up-regulate. A pseudogene of this gene is located on chromosome 12. Alternative splicing results in multiple transcript variants encoding different isoforms. [provided by RefSeq, Jan 2015]
<b>Molecular Mass</b>	36.52 kDa
<b>AA Sequence</b>	MESVVRRCPFLSRVPQAFLQKAGKSLLFYAQNCPKMMMEVGAKPAPRALSTAAVHY QQIKETPPASEKDKTAKAKVQQTPDGSQQSPDGTQLPSGHPLP
<b>Applications</b>	Enzyme-linked Immunoabsorbent Assay; Western Blot (Recombinant protein); Antibody Production; Protein Array
<b>Notes</b>	Best use within three months from the date of receipt of this protein.

 Tel: 1-631-559-9269    1-516-512-3133

 Email: [info@creative-biomart.com](mailto:info@creative-biomart.com)     Fax: 1-631-938-8127

 45-1 Ramsey Road, Shirley, NY 11967, USA

**Storage** Store at -80 centigrade. Aliquot to avoid repeated freezing and thawing.

**Storage Buffer** 50 mM Tris-HCl, 10 mM reduced Glutathione, pH=8.0 in the elution buffer.

## GENE INFORMATION

**Gene Name** ALAS1 aminolevulinate, delta-, synthase 1 [ Homo sapiens ]

**Official Symbol** ALAS1

**Synonyms** ALAS1; aminolevulinate, delta-, synthase 1; ALAS, ALAS3; 5-aminolevulinate synthase, nonspecific, mitochondrial; ALAS-H; delta-ALA synthase 1; migration-inducing protein 4; 5-aminolevulinic acid synthase 1; delta-aminolevulinate synthase 1; ALAS; MIG4; ALAS3; ALASH;

**Gene ID** 211

**mRNA Refseq** NM\_000688

**Protein Refseq** NP\_000679

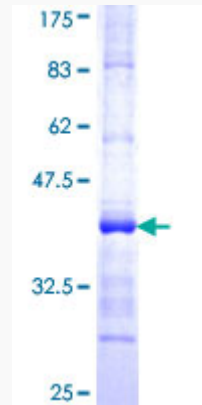
**MIM** 125290

**UniProt ID** P13196

 Tel: 1-631-559-9269 1-516-512-3133

 Email: [info@creative-biomart.com](mailto:info@creative-biomart.com)  Fax: 1-631-938-8127

 45-1 Ramsey Road, Shirley, NY 11967, USA



12.5% SDS-PAGE Stained with Coomassie Blue.

Tel: 1-631-559-9269 1-516-512-3133

Email: [info@creative-biomart.com](mailto:info@creative-biomart.com) Fax: 1-631-938-8127

45-1 Ramsey Road, Shirley, NY 11967, USA