

Recombinant Human ALB protein(Ala215Val)

Cat. No. ALB-0603H **Lot. No.** (See product label)

SPECIFICATION

Product Overview	Recombinant Human ALB protein(NP_000468.1)(Met1-Leu609, Ala215Val, natural variant) was expressed in Yeast.
Species	Human
Source	Yeast
ProteinLength	1-609 aa, Ala215Val, natural variant
Form	Lyophilized from sterile PBS, pH 7.4.
Molecular Mass	The recombinant human HSA consists of 58.5 amino acids and predicts a molecular mass of 66.5 KDa. It migrates as an approximately 58-67 KDa band in SDS-PAGE under reducing conditions.
Purity	> 95 % as determined by SDS-PAGE
Storage	Store it under sterile conditions at -20°C to -80°C upon receiving. Recommend to aliquot the protein into smaller quantities for optimal storage. Avoid repeated freeze-thaw cycles.
Reconstitution	It is recommended that sterile water be added to the vial to prepare a stock solution of 0.2 ug/ul. Centrifuge the vial at 4°C before opening to recover the entire contents.
protein Refseq-	http://www.ncbi.nlm.nih.gov/protein/NP_000468.1

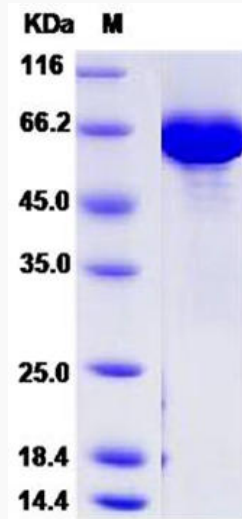
 Tel: 1-631-559-9269 1-516-512-3133

 Email: info@creative-biomart.com  Fax: 1-631-938-8127

 45-1 Ramsey Road, Shirley, NY 11967, USA

Weblink**Unit ID** P02768**Unit ID-Weblink** <http://www.uniprot.org/uniprot/P02768>**GENE INFORMATION****Gene Name** ALB albumin [Homo sapiens]**Official Symbol** ALB**Synonyms** ALB; albumin; serum albumin; albumin (32 AA); albumin (AA 34); growth-inhibiting protein 20; cell growth inhibiting protein 42; PRO0883; PRO0903; PRO1341; DKFZp779N1935;**Gene ID** 213**mRNA Refseq** NM_000477**protein Refseq** NP_000468 Tel: 1-631-559-9269 1-516-512-3133 Email: info@creative-biomart.com  Fax: 1-631-938-8127 45-1 Ramsey Road, Shirley, NY 11967, USA

SDS-PAGE



 Tel: 1-631-559-9269 1-516-512-3133

 Email: info@creative-biomart.com  Fax: 1-631-938-8127

 45-1 Ramsey Road, Shirley, NY 11967, USA