

Native Pigeon Serum Albumin

Cat. No. ALB-112P Lot. No. (See product label)

SPECIFICATION

Species	Pigeon
Description	Serum albumin, the main protein of plasma, has a good binding capacity for water, Ca(2+), Na(+), K(+), fatty acids, hormones, bilirubin and drugs. Its main function is the regulation of the colloidal osmotic pressure of blood. Major zinc transporter in plasma, typically binds about 80% of all plasma zinc.
Form	Liquid
Purity	>95% (SDS-PAGE)
Applications	Western blotting,ELISA,etc.
Storage	Aliquot and store at -20°C or -80°C. Avoid repeated freeze / thaw cycles.
Storage Buffer	PBS

GENE INFORMATION

Gene Name	ALB albumin [<i>Columba livia</i>]
Official Symbol	ALB
Synonyms	albumin

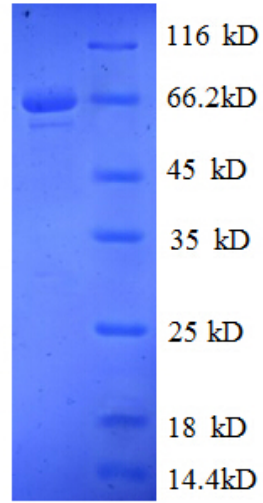
 Tel: 1-631-559-9269 1-516-512-3133


 Email: info@creative-biomart.com  Fax: 1-631-938-8127

 45-1 Ramsey Road, Shirley, NY 11967, USA


Gene ID 102091530

Chromosome Location chromosome: Un



 Tel: 1-631-559-9269 1-516-512-3133

 Email: info@creative-biomart.com  Fax: 1-631-938-8127

 45-1 Ramsey Road, Shirley, NY 11967, USA