

## Recombinant Dog ALB Protein (25-608 aa), His-tagged

Cat. No. ALB-323D Lot. No. (See product label)

### SPECIFICATION

<b>Product Overview</b>	Recombinant Dog ALB Protein (25-608 aa) is produced by E. coli expression system. This protein is fused with a 6xHis tag at the N-terminal. Research Area: Cardiovascular. Protein Description: Full Length of Mature Protein.
<b>Species</b>	Dog
<b>Source</b>	E.coli
<b>ProteinLength</b>	25-608 aa
<b>Description</b>	Serum albumin, the main protein of plasma, has a good binding capacity for water, Ca <sup>2+</sup> , Na <sup>+</sup> , K <sup>+</sup> , fatty acids, hormones, bilirubin and drugs. Its main function is the regulation of the colloidal osmotic pressure of blood. Major zinc transporter in plasma, typically binds about 80% of all plasma zinc.
<b>Form</b>	Tris-based buffer, 50% glycerol
<b>Molecular Mass</b>	69.7 kDa
<b>AA Sequence</b>	EAYKSEIAHRYNDLGEEHFRGLVLFVAFSQYLQQCPFEDHVKLAKEVTEFAKACAAEE SGANCDKSLHTLFGDKLCTVASLRDKYGDMADCCEKQEPDRNECFLAHKDDNPGF PPLVAPEPDALCAAFQDNEQLFLGKLYEYIARRHPYFYAPPELLLYAQQYKGVFAECC QAADKAAACLGPKIEALREKVLLSSAKERFKCASLQKFGDRAFKAWSVARLSQRFPK ADFAEISKVVTDLTKVHKECCHGDLLECADDRADLAKYMCENQDSISTKLKECCDKP VLEKSQCLAEVERDELPGDLPSLAADFVEDKEVCKNYQEAKDVFLGTFLYEYARRH

 Tel: 1-631-559-9269 1-516-512-3133

 Email: [info@creative-biomart.com](mailto:info@creative-biomart.com)  Fax: 1-631-938-8127

 45-1 Ramsey Road, Shirley, NY 11967, USA

PEYSVSLLLRLAKEYEATLEKCCATDDPPTCYAKVLDEFKPLVDEPQNLVKTNCELF  
 EKLGEYGFQNALLVRYTKKAPQVSTPTLVEVSRKLGKVGTKCCKKPESERMSCAED  
 FLSVVLNRLCVLHEKTPVSEKVTKCCSESLVNRPCFSGLEVDETYVPKEFNAETFT  
 FHADLCTLPEAEKQVKKQTALVELLKHKPKATDEQLKTVMGDFGAFVEKCCAAENK  
 EGCFSSEGPKLVAQAALV

**Purity** > 90% as determined by SDS-PAGE.

**Notes** Repeated freezing and thawing is not recommended. Store working aliquots at 4 centigrade for up to one week.

**Storage** The shelf life is related to many factors, storage state, buffer ingredients, storage temperature and the stability of the protein itself. Generally, the shelf life of liquid form is 6 months at -20 centigrade/-80 centigrade. The shelf life of lyophilized form is 12 months at -20 centigrade/-80 centigrade.

**Concentration** A hardcopy of COA with concentration instruction is sent along with the products.

## GENE INFORMATION

**Gene Name** [ALB albumin \[ Canis lupus familiaris \]](#)

**Official Symbol** [ALB](#)

**Synonyms** ALB; albumin; serum albumin; CSA;

**Gene ID** [403550](#)

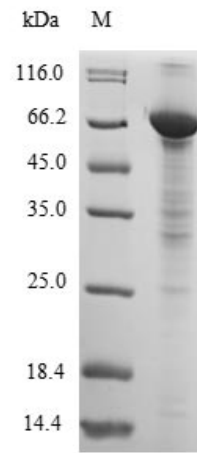
**mRNA Refseq** [NM\\_001003026](#)

**Protein Refseq** [NP\\_001003026](#)

 Tel: 1-631-559-9269 1-516-512-3133

 Email: [info@creative-biomart.com](mailto:info@creative-biomart.com)  Fax: 1-631-938-8127

 45-1 Ramsey Road, Shirley, NY 11967, USA



(Tris-Glycine gel) Discontinuous SDS-PAGE (reduced) with 5% enrichment gel and 15% separation gel.

Tel: 1-631-559-9269 1-516-512-3133

Email: [info@creative-biomart.com](mailto:info@creative-biomart.com) Fax: 1-631-938-8127

45-1 Ramsey Road, Shirley, NY 11967, USA