

Recombinant Cynomolgus Monkey ALB Protein (25-608 aa), His-SUMO-tagged

Cat. No. ALB-324C Lot. No. (See product label)

SPECIFICATION

Product Overview Recombinant Cynomolgus Monkey ALB Protein (25-608 aa) is produced by E. coli expression system. This protein is fused with a 6xHis-SUMO tag at the N-terminal. Research Area: Cardiovascular. Protein Description: Full Length of Mature Protein.

Species Cynomolgus

Source E.coli

ProteinLength 25-608 aa

Description Serum albumin, the main protein of plasma, has a good binding capacity for water, Ca²⁺, Na⁺, K⁺, fatty acids, hormones, bilirubin and drugs. Its main function is the regulation of the colloidal osmotic pressure of blood. Major zinc transporter in plasma, typically binds about 80% of all plasma zinc.

Form Tris-based buffer, 50% glycerol

Molecular Mass 82.0 kDa

AA Sequence
DTHKSEVAHRFKDLGEEHFKGLVLFVAFSQYLQQCPFEEHVKLVNEVTEFAKTCVAD
ESAENCDKSLHTLFGDKLCTVATLRETYGEMADCCAQKQEPERNECFLQHKDDNPNL
PPLVRPEVDVMCTAFHDNEATFLKKYLYEVARRHPYFYAPELLFFAARYKAAFAECC
QAADKAACLLPKLDEL RDEGKASSAKQRLKCASLQKFGDRAFKAWAVARLSQKFPK
AEFAEVSKLVTDLTKVHTECCHGDLLECADDRADLAKYMCENQDSISSKLKECCDK

 Tel: 1-631-559-9269 1-516-512-3133

 Email: info@creative-biomart.com  Fax: 1-631-938-8127

 45-1 Ramsey Road, Shirley, NY 11967, USA

PLLEKSHCLAEVENDEMPADLPSLAADYVESKDVCKNYAEAKDVFLGMFLYEYARR
 HPDYSVMLLLRLAKAYEATLEKCCAAADPHECYAKVFDEFQPLVEEPQNLVKQNC
 LFEQLGEYKFQNALLVRYTKKVPQVSTPTLVEVSRNLGKVGAKCCKLPEAKRMPCA
 EDYLSVVLNRLCVLHEKTPVSEKVTKCTESLVNRRPCFSALELDEAYVPKAFNAET
 FTFHADMCTLSEKEKQVKKQTALVELVKHKPKATKEQLKGVMDNFAAFVEKCKAD
 DKEACFAEEGPKFVAASQAALA

Purity > 90% as determined by SDS-PAGE.

Notes Repeated freezing and thawing is not recommended. Store working aliquots at 4 centigrade for up to one week.

Storage The shelf life is related to many factors, storage state, buffer ingredients, storage temperature and the stability of the protein itself. Generally, the shelf life of liquid form is 6 months at -20 centigrade/-80 centigrade. The shelf life of lyophilized form is 12 months at -20 centigrade/-80 centigrade.

Concentration A hardcopy of COA with concentration instruction is sent along with the products.

GENE INFORMATION

Gene Name ALB albumin [*Macaca fascicularis* (crab-eating macaque)]

Official Symbol ALB

Gene ID 102130757

mRNA Refseq XM_005555095.2

Protein Refseq XP_005555152.1

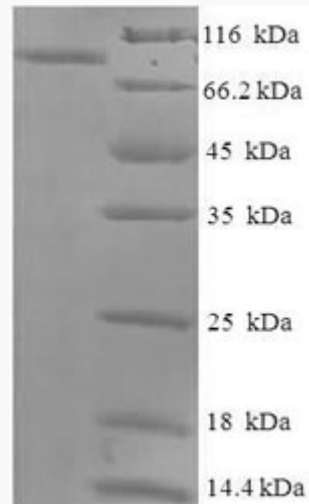
 Tel: 1-631-559-9269 1-516-512-3133

 Email: info@creative-biomart.com  Fax: 1-631-938-8127

 45-1 Ramsey Road, Shirley, NY 11967, USA

UniProt ID

A2V9Z4



(Tris-Glycine gel) Discontinuous SDS-PAGE (reduced) with 5% enrichment gel and 15% separation gel.

Tel: 1-631-559-9269 1-516-512-3133

Email: info@creative-biomart.com Fax: 1-631-938-8127

45-1 Ramsey Road, Shirley, NY 11967, USA