

Recombinant Human ALB Protein, GST-tagged

Cat. No. ALB-432H Lot. No. (See product label)

SPECIFICATION

Product Overview	Human ALB full-length ORF (AAH34023, 19 a.a. - 609 a.a.) recombinant protein with GST-tag at N-terminal.
Species	Human
Source	Wheat Germ
Description	<p>This gene encodes the most abundant protein in human blood. This protein functions in the regulation of blood plasma colloid osmotic pressure and acts as a carrier protein for a wide range of endogenous molecules including hormones, fatty acids, and metabolites, as well as exogenous drugs. Additionally, this protein exhibits an esterase-like activity with broad substrate specificity. The encoded preproprotein is proteolytically processed to generate the mature protein. A peptide derived from this protein, EPI-X4, is an endogenous inhibitor of the CXCR4 chemokine receptor. [provided by RefSeq, Jul 2016]</p>
Molecular Mass	90.75 kDa
AA Sequence	<p>RGVFRRDAHKSEVAHRFKDLGEENFKALVLIAFAQYLQQCPFEDHVKLVNEVTEFAK TCVADESAENCDKSLHTLFGDKLCTVATLRETYGEMADCCAKQEPERNECFLQHKD DNPNLPRLV RPEVDVMCTAFHDNEETFLKKYLYE IARRHPYFYAPELLFFAKRYKAA FTECCQAADKAA CLLPKLDEL RDEGKASSAKQRLK CASLQKFG ERAFKAWAVARLS QRFPKAEFAEVSKLVTDLTKVHTECCHGDLLECADDRADLAKYICENQDSISSKLKE CCEKPLLEKSHCIAEVENDEMPADLP SLAADFVESKDVCKNYAEAKDVFLGMFLYEY</p>

 Tel: 1-631-559-9269 1-516-512-3133

 Email: info@creative-biomart.com  Fax: 1-631-938-8127

 45-1 Ramsey Road, Shirley, NY 11967, USA

ARRHPDYSVLLLLRLAKTYETTLEKCCAAADPHECYAKVFDEFKPLVEEPQNLIKQN
 CELFEQLGEYKFQNALLVRYTKKVPQVSTPTLVEVSRNLGKVGSKCCKHPEAKRMP
 CAEDYLSVVLNQLCVLHEKTPVSDRVTKCCTESLVNRRPCFSALEVDETYVPKEFNA
 ETFTFHADICTLSEKERQIKKQTALVELVKHKPKATKEQLKAVMDDFAAFVEKCKAD
 DKETCFAEGGKLVAAASQAALGL

Applications Enzyme-linked Immunoabsorbent Assay; Western Blot (Recombinant protein);
 Antibody Production; Protein Array

Notes Best use within three months from the date of receipt of this protein.

Storage Store at -80 centigrade. Aliquot to avoid repeated freezing and thawing.

Storage Buffer 50 mM Tris-HCl, 10 mM reduced Glutathione, pH=8.0 in the elution buffer.

GENE INFORMATION

Gene Name [ALB albumin \[Homo sapiens \]](#)

Official Symbol [ALB](#)

Synonyms ALB; albumin; serum albumin; albumin (32 AA); albumin (AA 34); growth-inhibiting protein 20; cell growth inhibiting protein 42; PRO0883; PRO0903; PRO1341; DKFZp779N1935;

Gene ID [213](#)

mRNA Refseq [NM_000477](#)

Protein Refseq [NP_000468](#)

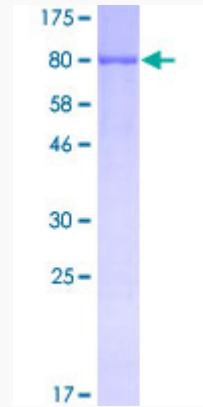
 Tel: 1-631-559-9269 1-516-512-3133

 Email: info@creative-biomart.com  Fax: 1-631-938-8127

 45-1 Ramsey Road, Shirley, NY 11967, USA

MIM 103600

UniProt ID P02768



12.5% SDS-PAGE Stained with Coomassie Blue.

Tel: 1-631-559-9269 1-516-512-3133

Email: info@creative-biomart.com Fax: 1-631-938-8127

45-1 Ramsey Road, Shirley, NY 11967, USA