

Recombinant Dog ALB protein, His-tagged

Cat. No. ALB-5339D Lot. No. (See product label)

SPECIFICATION

Product Overview	Recombinant Dog ALB protein(P49822)(25-608aa), fused to N-terminal His tag, was expressed in Yeast.
Species	Dog
Source	Yeast
ProteinLength	25-608aa
Form	If the delivery form is liquid, the default storage buffer is Tris/PBS-based buffer, 5%-50% glycerol. If the delivery form is lyophilized powder, the buffer before lyophilization is Tris/PBS-based buffer, 6% Trehalose, pH 8.0.
Molecular Mass	67.7 kDa
Purity	Greater than 90% as determined by SDS-PAGE.
Storage	Store at -20°C/-80°C upon receipt, aliquoting is necessary for mutiple use. Avoid repeated freeze-thaw cycles.
Reconstitution	Please reconstitute protein in deionized sterile water to a concentration of 0.1-1.0 mg/mL. We recommend to add 5-50% of glycerol (final concentration) and aliquot for long-term storage at -20°C/-80°C. Our default final concentration of glycerol is 50%.

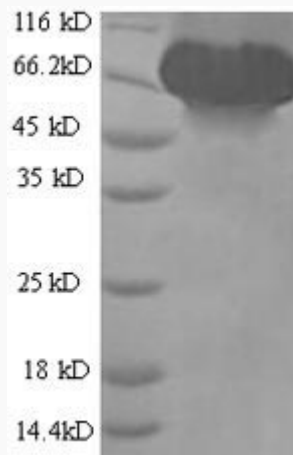
GENE INFORMATION

 Tel: 1-631-559-9269 1-516-512-3133

 Email: info@creative-biomart.com  Fax: 1-631-938-8127

 45-1 Ramsey Road, Shirley, NY 11967, USA

Gene Name	ALB albumin [<i>Canis lupus familiaris</i>]
Official Symbol	ALB
Synonyms	ALB; albumin; serum albumin; CSA;
Gene ID	403550
mRNA Refseq	NM_001003026
Protein Refseq	NP_001003026

SDS-PAGE

 Tel: 1-631-559-9269 1-516-512-3133

 Email: info@creative-biomart.com  Fax: 1-631-938-8127

 45-1 Ramsey Road, Shirley, NY 11967, USA