

Recombinant Human albumin Protein, HA tagged

Cat. No. ALB-55H Lot. No. (See product label)

SPECIFICATION

Product Overview	Recombinant Human ALB Protein with C-HA and N-Glu-Ala was expressed in Yeast (animal free media and environment).
Species	Human
Source	Yeast
Description	This gene encodes the most abundant protein in human blood. This protein functions in the regulation of blood plasma colloid osmotic pressure and acts as a carrier protein for a wide range of endogenous molecules including hormones, fatty acids, and metabolites, as well as exogenous drugs. Additionally, this protein exhibits an esterase-like activity with broad substrate specificity. The encoded preproprotein is proteolytically processed to generate the mature protein. A peptide derived from this protein, EPI-X4, is an endogenous inhibitor of the CXCR4 chemokine receptor.
Tag	C-HA; N-Glu-Ala
Form	Lyophilized
Molecular Mass	67.6 kDa
AA Sequence	(EA)DAHKSEVAHRFKDLGEEENFKALVLI AFAQYLQQCPFEDHVKLVNEVTEFAKTCV ADESAENCDKSLHTLFGDKLCTVATLRETYGEMADCCAKQEPERNECFLQHKDDN PNLPRLVRPEVDVMCTAFHDNEETFLKKYLYEIARRHPYFYAPELLFFAKRYKAAFTE CCQAADKAACLLPKLDLRDEGKASSAKQRLKCASLQKFGERAFKAWAVARLSQRF

 Tel: 1-631-559-9269 1-516-512-3133

 Email: info@creative-biomart.com  Fax: 1-631-938-8127

 45-1 Ramsey Road, Shirley, NY 11967, USA

PKAEFAEVSKLVTDLTKVHTECCHGDLLECADDRADLAKYICENQDSISSKLKECCE
 KPLLEKSHCIAEVENDEMPADLPSLAADFVESKDVCKNYAEAKDVFLGMFLYEYARR
 HPDYSVLLLLRLAKTYETTLEKCCAAADPHECYAKVFDEFKPLVEEPQNLIKQNCSELF
 EQLGEYKFQNALLVRYTKKVPQVSTPTLVEVSRNLGKVGSKCCKHPEAKRMPCAED
 YLSVVLNQLCVLHEKTPVSDRVTKCCTESLVNRRPCFSALEVDETYVPKEFNAETFT
 FHADICTLSEKERQIKKQTALVELVKHKPKATKEQLKAVMDDFAAFVEKCKKADDKE
 TCFAEEGKKLVAASQAALGLYPYDVPDYA

Endotoxin	< 0.2 EU/μg of protein as determined by the LAL method.
Purity	0.98
Storage	Stable for at least one year at -20 centigrade. Upon reconstitution HSA can be stored at +4 centigrade for 1 day or at -20 centigrade for 6 months.
Concentration	100 μg/μL
Storage Buffer	Phosphate -buffered saline (PBS), pH 7.4
Reconstitution	Spin the vial briefly, add distilled sterile water.

GENE INFORMATION

Gene Name	ALB albumin [Homo sapiens (human)]
Official Symbol	ALB
Synonyms	ALB; albumin; serum albumin; albumin (32 AA); albumin (AA 34); growth-inhibiting protein 20; cell growth inhibiting protein 42; PRO0883; PRO0903; PRO1341; DKFZp779N1935

 Tel: 1-631-559-9269 1-516-512-3133

 Email: info@creative-biomart.com  Fax: 1-631-938-8127

 45-1 Ramsey Road, Shirley, NY 11967, USA

Gene ID 213

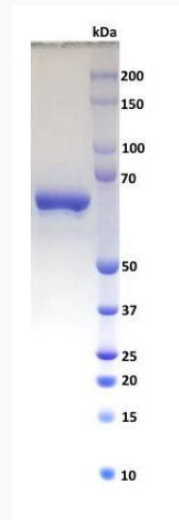
mRNA Refseq NM_000477

Protein Refseq NP_000468

MIM 103600

UniProt ID P02768

SDS-PAGE



HSA was loaded and resolved on 8-22 % SDS-PAGE and stained with Coomassie G-250.

Tel: 1-631-559-9269 1-516-512-3133

Email: info@creative-biomart.com Fax: 1-631-938-8127

45-1 Ramsey Road, Shirley, NY 11967, USA