

# Recombinant Full Length Human ALB Protein, C-Flag-tagged

Cat. No. ALB-872HFL Lot. No. (See product label)

## SPECIFICATION

<b>Product Overview</b>	Recombinant Full Length Human ALB Protein, fused to Flag-tag at C-terminus, was expressed in Mammalian cells.
<b>Species</b>	Human
<b>Source</b>	Mammalian Cells
<b>Description</b>	This gene encodes the most abundant protein in human blood. This protein functions in the regulation of blood plasma colloid osmotic pressure and acts as a carrier protein for a wide range of endogenous molecules including hormones, fatty acids, and metabolites, as well as exogenous drugs. Additionally, this protein exhibits an esterase-like activity with broad substrate specificity. The encoded preproprotein is proteolytically processed to generate the mature protein. A peptide derived from this protein, EPI-X4, is an endogenous inhibitor of the CXCR4 chemokine receptor.
<b>Form</b>	25 mM Tris HCl, pH 7.3, 100 mM glycine, 10% glycerol.
<b>Molecular Mass</b>	67.2 kDa
<b>AA Sequence</b>	MKWVTFISLLFLFSSAYSARGVFRDDAHKSEVAHRFKDLGEEENFKALVLIIFAQYLQQ CPFEDHVKLVNEV TEFKTCVADESAENCDKSLHTLFGDKLCTVATLRETYGEMAD CCAKQEPERNECFLQHKDDNPNLRLV RPEVDVMCTAFHDNEETFLKKYLYEIARR HPYFYAPPELLFFAKRYKAAFTECCQAADKAAACLLPKLDEL R DEGKASSAKQRLKCA SLQKFGERAFKAWAVARLSQRFPKAEFAEVSKLVTDLTKVHTECCHGDLLECADD R ADLAKYICENQDSISSKLKECCEKPLLEKSHCIAEVENDEMPADLPSLAADFVESKDV

 Tel: 1-631-559-9269 1-516-512-3133

 Email: [info@creative-biomart.com](mailto:info@creative-biomart.com)  Fax: 1-631-938-8127

 45-1 Ramsey Road, Shirley, NY 11967, USA

CKNYAEAKDVF LGMFLYEYARRHPDYSVLLLLRLAKTYETTLEKCCAAADPHECYA  
 KVDFEFKPLVEEPQNLIKQNCELFE QLGEYKFQNALLVRYTKKVPQVSTPTLVEVSR  
 NLGKVGSKCCKHPEAKRMPCAEDYLSVVLNQLCVLHEK TPVSDRVTKCCTESLVN  
 RRPCFSALEVDETYVPKEFNAETFTFHADICTLSEKERQIKKQTALVELVKHK  
 PKATKEQLKAVMDDFAAFVEKCKADDKETCFAEEGKKLVAASQAALGLTRTRPLE  
 QKLISEEDLAANDILDYKDDDDKV

<b>Purity</b>	> 80% as determined by SDS-PAGE and Coomassie blue staining.
<b>Stability</b>	Stable for 12 months from the date of receipt of the product under proper storage and handling conditions. Avoid repeated freeze-thaw cycles.
<b>Storage</b>	Store at -80 centigrade.
<b>Concentration</b>	>50 ug/mL as determined by microplate BCA method.
<b>Preparation</b>	Recombinant protein was captured through anti-DDK affinity column followed by conventional chromatography steps.
<b>Protein Families</b>	Secreted Protein
<b>Full Length</b>	Full L.

## GENE INFORMATION

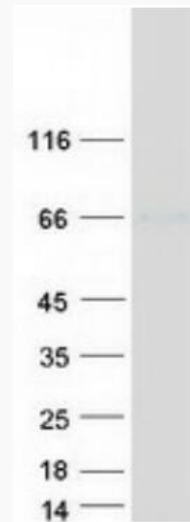
<b>Gene Name</b>	ALB albumin [ Homo sapiens (human) ]
<b>Official Symbol</b>	ALB
<b>Synonyms</b>	HSA; FDAHT; PRO0883; PRO0903; PRO1341

 Tel: 1-631-559-9269 1-516-512-3133

 Email: [info@creative-biomart.com](mailto:info@creative-biomart.com)  Fax: 1-631-938-8127

 45-1 Ramsey Road, Shirley, NY 11967, USA

Gene ID	213
mRNA Refseq	NM_000477.7
Protein Refseq	NP_000468.1
MIM	103600
UniProt ID	P02768



Coomassie blue staining of purified ALB protein.

Tel: 1-631-559-9269 1-516-512-3133

Email: [info@creative-biomart.com](mailto:info@creative-biomart.com) Fax: 1-631-938-8127

45-1 Ramsey Road, Shirley, NY 11967, USA