

Recombinant Human ALB protein, His-tagged

Cat. No. ALB-9546H Lot. No. (See product label)

SPECIFICATION

Product Overview	Recombinant Human ALB protein(256-609 aa), fused with N-terminal His tag, was expressed in E. coli.
Species	Human
Source	E.coli
ProteinLength	256-609 aa
Tag	N-His
Form	The purified protein was Lyophilized from sterile PBS (58mM Na ₂ HPO ₄ , 17mM NaH ₂ PO ₄ , 68mM NaCl, pH7.4). 5 % trehalose and 5 % mannitol are added as protectant before lyophilization.
Purity	75%, by SDS-PAGE with Coomassie Brilliant Blue staining.
Storage	Short-term storage: Store at 2-8°C for (1-2 weeks). Long-term storage: Aliquot and store at -20°C to -80°C for up to 3 months, reconstitution with sterile water and addition of an equal volume of glycerol. Avoid repeat freeze-thaw cycles.
Reconstitution	Reconstitute at 0.25 µg/µl in 200 µl sterile water for short-term storage. After reconstitution with sterile water, if glycerol has no effect on subsequent experiments, it is recommended to add an equal volume of glycerol for long-term storage.

 Tel: 1-631-559-9269 1-516-512-3133

 Email: info@creative-biomart.com  Fax: 1-631-938-8127

 45-1 Ramsey Road, Shirley, NY 11967, USA

AA Sequence

SKLVTDLTKVHTECCHGDLLECADDRADLAKYICENQDSISSKLKECCEKPLLEKSH
CIAEVENDEMPADLPSLAADFVESKDVCNKYAEAKDVFLGMFLYEYARRHPDYSVV
LLLRLAKTYETTLEKCCAAADPHECYAKVFDEFKPLVEEPQNLIKQNCLEFEQLGEYK
FQNALLVRYTKKVPQVSTPTLVEVSRNLGKVGSKCCKHPEAKRMPCAEDYLSVVLN
QLCVLHEKTPVSDRVTKCCTESLVNRRPCFSALEVDETYVPKEFNAETFTFHADICT
LSEKERQIKKQTALVELVKHKPKATKEQLKAVMDDFAAFVEKCKKADDKETCFAEEG
KKLVAASQAALGL

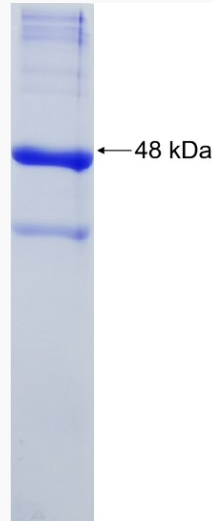
GENE INFORMATION**Gene Name** [ALB albumin \[Homo sapiens \]](#)**Official Symbol** [ALB](#)**Synonyms**

ALB; albumin; serum albumin; albumin (32 AA); albumin (AA 34); growth-inhibiting protein 20; cell growth inhibiting protein 42; PRO0883; PRO0903; PRO1341; DKFZp779N1935;

Gene ID [213](#)**mRNA Refseq** [NM_000477](#)**Protein Refseq** [NP_000468](#)**UniProt ID** [P02768](#) Tel: 1-631-559-9269 1-516-512-3133 Email: info@creative-biomart.com  Fax: 1-631-938-8127 45-1 Ramsey Road, Shirley, NY 11967, USA



SDS-PAGE



Tel: 1-631-559-9269 1-516-512-3133

Email: info@creative-biomart.com Fax: 1-631-938-8127

45-1 Ramsey Road, Shirley, NY 11967, USA