

Recombinant Human ALCAM Protein, Trp28-Ala526, C-His tagged, Biotinylated

Cat. No. ALCAM-011H Lot. No. (See product label)

SPECIFICATION

Product Overview	Recombinant human ALCAM/CD166-C-His protein was developed from HEK293 and has a target region of C-His.
Species	Human
Source	HEK293
ProteinLength	Trp28-Ala526
Description	This gene encodes activated leukocyte cell adhesion molecule (ALCAM), also known as CD166 (cluster of differentiation 166), which is a member of a subfamily of immunoglobulin receptors with five immunoglobulin-like domains (VVC2C2C2) in the extracellular domain. This protein binds to T-cell differentiation antigen CD6, and is implicated in the processes of cell adhesion and migration. Multiple alternatively spliced transcript variants encoding different isoforms have been found.
Conjugation/Label	Biotin
Form	Lyophilised
Endotoxin	Endotoxin level was found to be less than 0.1 ng/μg (1 EU/μg).
Notes	FOR RESEARCH USE ONLY (RUO).

 Tel: 1-631-559-9269 1-516-512-3133

 Email: info@creative-biomart.com  Fax: 1-631-938-8127

 45-1 Ramsey Road, Shirley, NY 11967, USA

Storage	The lyophilized protein is stable for at least 1 year from date of receipt at -20 centigrade.
Storage Buffer	Lyophilised from 0.2 µm filtered PBS solution pH 7.4. Upon receipt centrifuge vial to ensure maximal product extraction, recommended: 20 sec, 5K RPM
Conjugation	Biotin

GENE INFORMATION

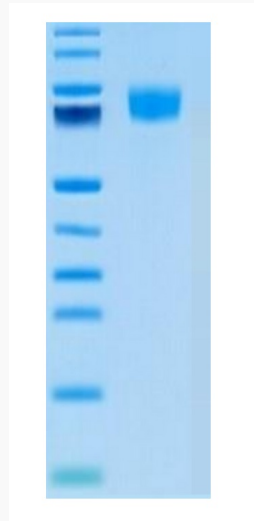
Gene Name	ALCAM activated leukocyte cell adhesion molecule [Homo sapiens (human)]
Official Symbol	ALCAM
Synonyms	ALCAM; activated leukocyte cell adhesion molecule; activated leucocyte cell adhesion molecule; CD166 antigen; CD166; MEMD; FLJ38514; MGC71733;
Gene ID	214
mRNA Refseq	NM_001243280
Protein Refseq	NP_001230209
MIM	601662
UniProt ID	Q13740

 Tel: 1-631-559-9269 1-516-512-3133

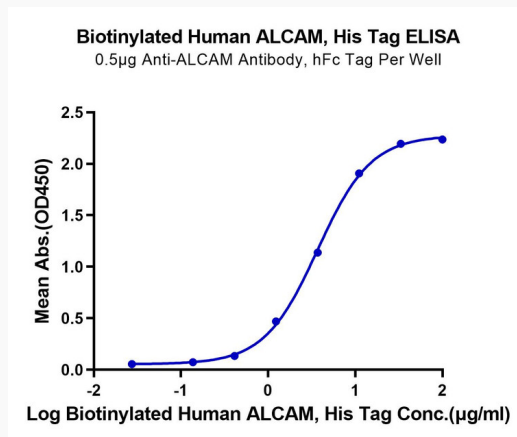
 Email: info@creative-biomart.com  Fax: 1-631-938-8127

 45-1 Ramsey Road, Shirley, NY 11967, USA

Biotinylated Human ALCAM (Primary Amine Labeling) on Tris-Bis PAGE under reduced condition. The purity is greater than 95%.



Immobilized Anti-ALCAM Antibody, hFc Tag at 5 µg/mL (100 µL/Well) on the plate. Dose response curve for Biotinylated Human ALCAM, His Tag with the EC50 of 3.7 µg/mL determined by ELISA.



 Tel: 1-631-559-9269 1-516-512-3133

 Email: info@creative-biomart.com  Fax: 1-631-938-8127

 45-1 Ramsey Road, Shirley, NY 11967, USA