

Active Recombinant Human ALCAM protein, hFc&His-tagged

Cat. No. ALCAM-2650H Lot. No. (See product label)

SPECIFICATION

Product Overview	Active Recombinant Human ALCAM/CD166 Protein is produced by HEK293 expression system. The target protein is expressed with sequence (Met1-Ala526) of human ALCAM/CD166 (Accession #NP_001618.2) fused with an Fc, 6×His tag at the C-terminus.
Species	Human
Source	HEK293
ProteinLength	Met1-Ala526
Form	Lyophilized from a 0.22 μm filtered solution of PBS, pH 7.4.
Bio-activity	1.Measured by its binding ability in a functional ELISA.Immobilized Human CD6 at 1 μg/mL (100 μL/well) can bind Human CD166 with a linear range of 0.05-1.2 ng/mL. 2.Measured by its ability to block adhesion of Jurkat cells to immobilized Recombinant Human CD6 Protein . The ED50 for this effect is 2.7-10.8 μg/mL.
Molecular Mass	120 kDa
Endotoxin	< 0.1 EU/μg of the protein by LAL method.
Purity	> 97% by SDS-PAGE.
Storage	Store the lyophilized protein at -20°C to -80 °C for long term.

 Tel: 1-631-559-9269 1-516-512-3133

 Email: info@creative-biomart.com  Fax: 1-631-938-8127

 45-1 Ramsey Road, Shirley, NY 11967, USA

After reconstitution, the protein solution is stable at -20 °C for 3 months, at 2-8 °C for up to 1 week.

Reconstitution Reconstitute to a concentration of 0.1-0.5 mg/mL in sterile distilled water.

GENE INFORMATION

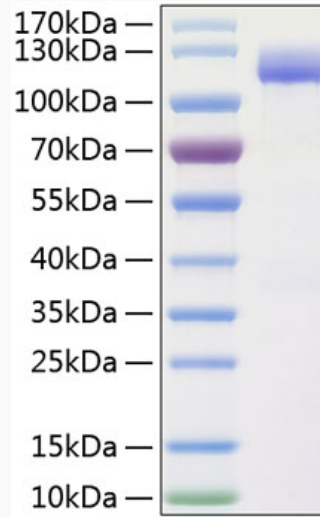
Gene Name	ALCAM activated leukocyte cell adhesion molecule [Homo sapiens]
Official Symbol	ALCAM
Synonyms	ALCAM; activated leukocyte cell adhesion molecule; activated leucocyte cell adhesion molecule; CD166 antigen; CD166; MEMD; FLJ38514; MGC71733;
Gene ID	214
mRNA Refseq	NM_001243280
Protein Refseq	NP_001230209
MIM	601662
UniProt ID	Q13740

 Tel: 1-631-559-9269 1-516-512-3133

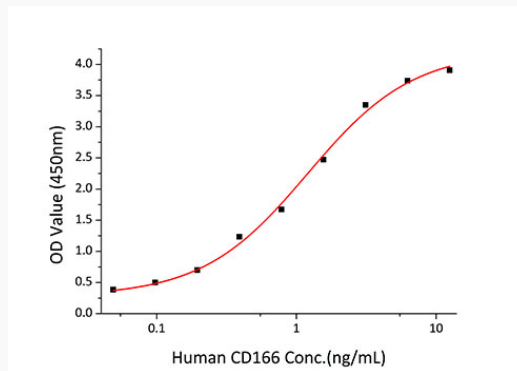
 Email: info@creative-biomart.com  Fax: 1-631-938-8127

 45-1 Ramsey Road, Shirley, NY 11967, USA

SDS-PAGE



Bio-activity



 Tel: 1-631-559-9269 1-516-512-3133

 Email: info@creative-biomart.com  Fax: 1-631-938-8127

 45-1 Ramsey Road, Shirley, NY 11967, USA