

Recombinant Human ALCAM protein, His-tagged

Cat. No. ALCAM-505H Lot. No. (See product label)

SPECIFICATION

Product Overview	Recombinant Human ALCAM protein(Trp28~Leu528), fused with N-terminal His tag, was expressed in E.coli.
Species	Human
Source	E.coli
ProteinLength	28-528 aa
Form	Lyophilized from PBS, pH7.4, containing 0.01% SKL, 5% Trehalose.
Molecular Mass	59.9kDa
Endotoxin	<1.0EU per 1g (determined by the LAL method)
Purity	> 90%
Storage	Avoid repeated freeze/thaw cycles. Store at -20°C for 12 months. Aliquot and store at -80°C for 12 months.
Reconstitution	Reconstitute in 10mM PBS (pH7.4) to a concentration of 0.1-1.0 mg/mL. Do not vortex.

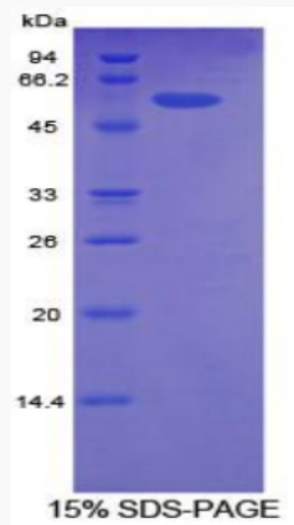
GENE INFORMATION

 Tel: 1-631-559-9269 1-516-512-3133

 Email: info@creative-biomart.com  Fax: 1-631-938-8127

 45-1 Ramsey Road, Shirley, NY 11967, USA

Gene Name	ALCAM activated leukocyte cell adhesion molecule [Homo sapiens]
Official Symbol	ALCAM
Synonyms	ALCAM; activated leukocyte cell adhesion molecule; activated leucocyte cell adhesion molecule; CD166 antigen; CD166; MEMD; FLJ38514; MGC71733;
Gene ID	214
mRNA Refseq	NM_001243280
Protein Refseq	NP_001230209
MIM	601662
UniProt ID	Q13740

SDS-PAGE


Tel: 1-631-559-9269 1-516-512-3133

Email: info@creative-biomart.com Fax: 1-631-938-8127

45-1 Ramsey Road, Shirley, NY 11967, USA