

## Recombinant Rabbit ALCAM protein, His-tagged

Cat. No. ALCAM-508R Lot. No. (See product label)

### SPECIFICATION

**Product Overview** Recombinant Rabbit ALCAM aa. (Gly225~Ala478) fused with N-terminal His tag was produced in E. coli cells.

**Species** Rabbit

**Source** E.coli

**ProteinLength** Gly225~Ala478

**Form** Freeze-dried powder

**Molecular Mass** Predicted Molecular Mass: 29.3kDa

**Endotoxin** <1.0EU per 1g (determined by the LAL method)

**Purity** > 95%

**Characteristic** The isoelectric point is 6.2.

**Applications** SDS-PAGE; WB; ELISA; IP

**Stability** The thermal stability is described by the loss rate. The loss rate was determined by accelerated thermal degradation test, that is, incubate the protein at 37°C for 48h, and no obvious degradation and precipitation were observed. The loss rate is less than 5% within the expiration date under appropriate storage condition.

 Tel: 1-631-559-9269 1-516-512-3133

 Email: [info@creative-biomart.com](mailto:info@creative-biomart.com)  Fax: 1-631-938-8127

 45-1 Ramsey Road, Shirley, NY 11967, USA

<b>Storage</b>	Avoid repeated freeze/thaw cycles. Store at 2-8°C for one month. Aliquot and store at -80°C for 12 months.
<b>Storage buffer</b>	PBS, pH7.4, containing 5% sucrose, 0.01% sarcosyl.
<b>Reconstitution</b>	Reconstitute in sterile PBS, pH7.2-pH7.4

## GENE INFORMATION

<b>Gene Name</b>	ALCAM activated leukocyte cell adhesion molecule [ <i>Oryctolagus cuniculus</i> (rabbit) ]
<b>Official Symbol</b>	ALCAM
<b>Synonyms</b>	ALCAM; activated leukocyte cell adhesion molecule; CD166 antigen
<b>Gene ID</b>	100009305
<b>mRNA Refseq</b>	XM_008267007.2
<b>Protein Refseq</b>	XP_008265229.1

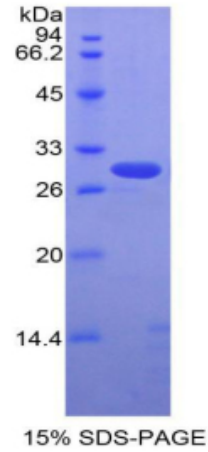
 Tel: 1-631-559-9269 1-516-512-3133

 Email: [info@creative-biomart.com](mailto:info@creative-biomart.com)  Fax: 1-631-938-8127

 45-1 Ramsey Road, Shirley, NY 11967, USA



SDS-PAGE



Tel: 1-631-559-9269 1-516-512-3133

Email: [info@creative-biomart.com](mailto:info@creative-biomart.com) Fax: 1-631-938-8127

45-1 Ramsey Road, Shirley, NY 11967, USA