

## Active Recombinant Human ALDH1A1 Protein

Cat. No. ALDH1A1-01H Lot. No. (See product label)

### SPECIFICATION

<b>Product Overview</b>	Recombinant Human ALDH1A1 Protein was expressed in Escherichia coli cell
<b>Species</b>	Human
<b>Source</b>	E.coli
<b>ProteinLength</b>	501aa
<b>Description</b>	<p>The protein encoded by this gene belongs to the aldehyde dehydrogenase family. Aldehyde dehydrogenase is the next enzyme after alcohol dehydrogenase in the major pathway of alcohol metabolism. There are two major aldehyde dehydrogenase isozymes in the liver, cytosolic and mitochondrial, which are encoded by distinct genes, and can be distinguished by their electrophoretic mobility, kinetic properties, and subcellular localization. This gene encodes the cytosolic isozyme. Studies in mice show that through its role in retinol metabolism, this gene may also be involved in the regulation of the metabolic responses to high-fat diet.</p>
<b>Form</b>	Liquid
<b>Bio-activity</b>	Specific activity is > 700 pmol/min/ug, and was obtained by measuring the increase of NADH in absorbance at 340nm resulting from the reduction of NAD at pH 8.8 at 37C.
<b>Molecular Mass</b>	54.8 kDa (501aa) confirmed by MALDI-TOF
<b>Purity</b>	> 90% by SDS-PAGE

 Tel: 1-631-559-9269 1-516-512-3133

 Email: [info@creative-biomart.com](mailto:info@creative-biomart.com)  Fax: 1-631-938-8127

 45-1 Ramsey Road, Shirley, NY 11967, USA

<b>Applications</b>	SDS-PAGE, Enzyme Activity
<b>Storage</b>	Can be stored at +2C to +8C for 1 week. For long term storage, aliquot and store at -20C to -80C. Avoid repeated freezing and thawing cycles.
<b>Concentration</b>	1mg/ml (determined by Bradford assay)
<b>Storage Buffer</b>	Liquid in. 50mM Tris-HCl buffer (pH 7.5) containing 10% glycerol

## GENE INFORMATION

<b>Gene Name</b>	ALDH1A1 aldehyde dehydrogenase 1 family member A1 [ Homo sapiens (human) ]
<b>Official Symbol</b>	ALDH1A1
<b>Synonyms</b>	Retinal dehydrogenase 1, RALDH1, ALDC, ALDH-E1, ALDH1, ALDH11, PuMB1, RALDH1, Acetaldehyde dehydrogenase 1, AHD2, Aldehyde Dehydrogenase, MGC2318, RALDH 1, RaLDH1 Aldehyde dehydrogenase 1 family member A1, Aldehyde dehydrogenase 1 soluble, Aldehyde dehydrogenase 1A1, Aldehyde dehydrogenase cytosolic, ALHDII, Aldehyde dehydrogenase family 1 member A1, Aldehyde dehydrogenase liver cytosolic, ALDH 1, ALDH 1A1, ALDH class 1, ALDH-E1, ALDH1 A1
<b>Gene ID</b>	216
<b>mRNA Refseq</b>	NM_000689.5
<b>Protein Refseq</b>	NP_000680.2
<b>MIM</b>	100640

 Tel: 1-631-559-9269 1-516-512-3133

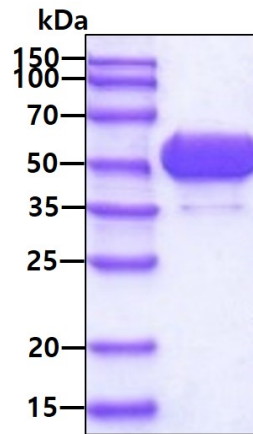
 Email: [info@creative-biomart.com](mailto:info@creative-biomart.com)  Fax: 1-631-938-8127

 45-1 Ramsey Road, Shirley, NY 11967, USA

UniProt ID

P00352

SDS-PAGE



3ug by SDS-PAGE under reducing condition and visualized by coomassie blue stain

 Tel: 1-631-559-9269 1-516-512-3133

 Email: [info@creative-biomart.com](mailto:info@creative-biomart.com)  Fax: 1-631-938-8127

 45-1 Ramsey Road, Shirley, NY 11967, USA