

# Recombinant Human ALDH1A1 Protein (Met1-Ser501), N-His-tagged

Cat. No. ALDH1A1-0568H Lot. No. (See product label)

## SPECIFICATION

<b>Product Overview</b>	Recombinant human ALDH1A1 (Met1-Ser501) was fused with the N-terminal His tag and was expressed in E. coli.
<b>Species</b>	Human
<b>Source</b>	E.coli
<b>ProteinLength</b>	Met1-Ser501
<b>Form</b>	Lyophilized powder/frozen liquid
<b>Molecular Mass</b>	55.11 kDa
<b>Purity</b>	>90% as determined by SDS-PAGE
<b>Notes</b>	For research use only.
<b>Storage</b>	Use a manual defrost freezer and avoid repeated freeze thaw cycles. Store at 2 to 8 centigrade for one week. Store at -20 to -80 centigrade for twelve months from the date of receipt.
<b>Storage Buffer</b>	Supplied as solution form in PBS or lyophilized from PBS.
<b>Reconstitution</b>	Reconstitute in sterile water for a stock solution.

 Tel: 1-631-559-9269 1-516-512-3133

 Email: [info@creative-biomart.com](mailto:info@creative-biomart.com)  Fax: 1-631-938-8127

 45-1 Ramsey Road, Shirley, NY 11967, USA

**Shipping** They are shipped out with dry ice/blue ice unless customers require otherwise.

## GENE INFORMATION

**Gene Name** [ALDH1A1 aldehyde dehydrogenase 1 family, member A1 \[ Homo sapiens \(human\) \]](#)

**Official Symbol** [ALDH1A1](#)

**Synonyms** ALDH1A1; aldehyde dehydrogenase 1 family, member A1; ALDH1, PUMB1; retinal dehydrogenase 1; RALDH1; retinaldehyde dehydrogenase 1; ALHDII; RALDH 1; ALDH class 1; acetaldehyde dehydrogenase 1; aldehyde dehydrogenase 1, soluble; aldehyde dehydrogenase, liver cytosolic; ALDC; ALDH1; PUMB1; ALDH11; ALDH-E1; MGC2318;

**Gene ID** [216](#)

**mRNA Refseq** [NM\\_000689](#)

**Protein Refseq** [NP\\_000680](#)

**MIM** [100640](#)

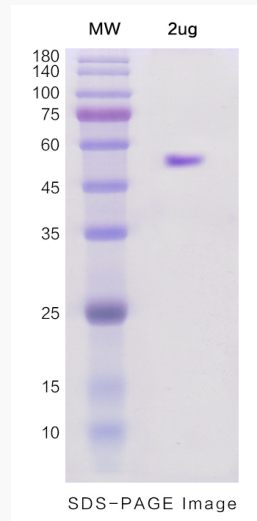
**UniProt ID** [P00352](#)

 Tel: 1-631-559-9269 1-516-512-3133

 Email: [info@creative-biomart.com](mailto:info@creative-biomart.com)  Fax: 1-631-938-8127

 45-1 Ramsey Road, Shirley, NY 11967, USA

**SDS-PAGE**



 Tel: 1-631-559-9269 1-516-512-3133

 Email: [info@creative-biomart.com](mailto:info@creative-biomart.com)  Fax: 1-631-938-8127

 45-1 Ramsey Road, Shirley, NY 11967, USA