

Recombinant Mouse ALDH1A1 Protein (2-501 aa), His-tagged

Cat. No. ALDH1A1-1845M **Lot. No.** (See product label)

SPECIFICATION

Product Overview	Recombinant Mouse ALDH1A1 Protein (2-501 aa) is produced by Yeast expression system. This protein is fused with a 6xHis tag at the N-terminal. Research Area: Cancer. Protein Description: Full Length of Mature Protein.
Species	Mouse
Source	Yeast
ProteinLength	2-501 aa
Description	In addition to the activity on acetaldehyde and related substrates, is also involved in the oxidation of aldehydes derived from biogenic amines such as epinephrine and norepinephrine, as well as the aldehydes generated via lipid peroxidation. Binds free retinal and cellular retinol-binding protein-bound retinal. Can convert/oxidize retinaldehyde to retinoic acid
Form	Tris-based buffer,50% glycerol
Molecular Mass	56.3 kDa
AA Sequence	SSPAQPAVPAPLADLKIQHTKIFINNEWHNSVSGKKFPVLPATEEVICHVEEGDKAD VDKAVKAARQAFQIGSPWRTMDASERGRLLNKLADLMERDRLLLATMEALNGGKVF ANAYLSDLGGCIKALKYCAGWADKIHGQTIPSDGDIFTYTRREPIGVCGQIIPWNFPM LMFIWKIGPALSCGNTVVVKPAEQTPLTALHLASLIKEAGFPPGVVNVIPGYGPTAGA AISSHMDVDKVAFTGSTQVGKLIKEAAGKSNLKRVTLELGGKSPCIVFADADLDIAVE

 Tel: 1-631-559-9269 1-516-512-3133

 Email: info@creative-biomart.com  Fax: 1-631-938-8127

 45-1 Ramsey Road, Shirley, NY 11967, USA

FAHHGVFYHQGCCVAASRIFVEESVYDEFVKRSVERAKKYVLGNPLTPGINQGPQI
 DKEQHDKILDIESGKKEGAKLECGGGRWGNKGGFFVQPTVFSNVTDEMRIAKEEIFG
 PVQQIMKFKSVDDVIKRRANNTTYGLAAGLFTKDLDAITVSSALQAGVVWVNCYMML
 SAQCPFGGFKMSGNGRELGEHGLYEYTELKTVMKISQKNS

Purity > 90% as determined by SDS-PAGE.

Notes Repeated freezing and thawing is not recommended. Store working aliquots at 4 centigrade for up to one week.

Storage The shelf life is related to many factors, storage state, buffer ingredients, storage temperature and the stability of the protein itself. Generally, the shelf life of liquid form is 6 months at -20 centigrade/-80 centigrade. The shelf life of lyophilized form is 12 months at -20 centigrade/-80 centigrade.

Concentration A hardcopy of COA with reconstitution instruction is sent along with the products.

GENE INFORMATION

Gene Name [Aldh1a1 aldehyde dehydrogenase family 1, subfamily A1 \[Mus musculus \]](#)

Official Symbol [ALDH1A1](#)

Synonyms ALDH1A1; ALHDII; ALDH-E1; RALDH 1; E1; Ahd2; Ahd-2; Aldh1; Raldh1; Aldh1a2;

Gene ID [11668](#)

mRNA Refseq [NM_013467](#)

Protein Refseq [NP_038495](#)

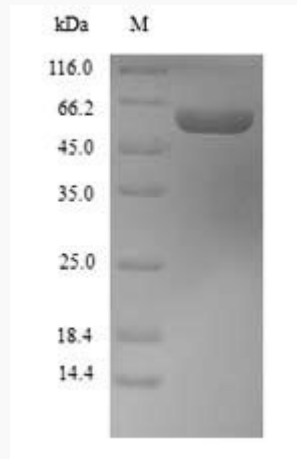
 Tel: 1-631-559-9269 1-516-512-3133

 Email: info@creative-biomart.com  Fax: 1-631-938-8127

 45-1 Ramsey Road, Shirley, NY 11967, USA

UniProt ID

P24549



(Tris-Glycine gel) Discontinuous SDS-PAGE (reduced) with 5% enrichment gel and 15% separation gel.

Tel: 1-631-559-9269 1-516-512-3133

Email: info@creative-biomart.com Fax: 1-631-938-8127

45-1 Ramsey Road, Shirley, NY 11967, USA