

## Recombinant Human ALDH1A1 protein, His-tagged

Cat. No. ALDH1A1-5648H    Lot. No. (See product label)

### SPECIFICATION

<b>Product Overview</b>	Recombinant Human ALDH1A1 protein(P00352)(516aa), fused with N-terminal His tag, was expressed in E. coli.
<b>Species</b>	Human
<b>Source</b>	E.coli
<b>Protein Length</b>	516aa(including fusion tag)
<b>Tag</b>	N-His
<b>Form</b>	20mM Tris.Cl, 50mM NaCl, 20% Glycerol, pH9.0.
<b>Molecular Mass</b>	56.8kDa(including fusion tag)
<b>Storage</b>	Store at -80°C and avoid repeated freeze-thaw cycles.
<b>Reconstitution</b>	It is recommended that sterile water be added to the vial to prepare a stock solution of 0.2 ug/ul. Centrifuge the vial at 4°C before opening to recover the entire contents.

### GENE INFORMATION

<b>Gene Name</b>	ALDH1A1 aldehyde dehydrogenase 1 family, member A1 [ Homo sapiens ]
<b>Official Symbol</b>	ALDH1A1

 Tel: 1-631-559-9269    1-516-512-3133

 Email: [info@creative-biomart.com](mailto:info@creative-biomart.com)     Fax: 1-631-938-8127

 45-1 Ramsey Road, Shirley, NY 11967, USA

**Synonyms** ALDH1A1; aldehyde dehydrogenase 1 family, member A1; ALDH1, PUMB1; retinal dehydrogenase 1; RALDH1; retinaldehyde dehydrogenase 1; ALHDII; RALDH 1; ALDH class 1; acetaldehyde dehydrogenase 1; aldehyde dehydrogenase 1, soluble; aldehyde dehydrogenase, liver cytosolic; ALDC; ALDH1; PUMB1; ALDH11; ALDH-E1; MGC2318;

**Gene ID** 216

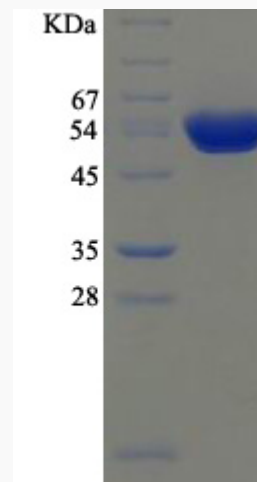
**mRNA Refseq** NM\_000689

**Protein Refseq** NP\_000680

**MIM** 100640

**UniProt ID** P00352

**SDS-PAGE**



 Tel: 1-631-559-9269 1-516-512-3133

 Email: [info@creative-biomart.com](mailto:info@creative-biomart.com)  Fax: 1-631-938-8127

 45-1 Ramsey Road, Shirley, NY 11967, USA