

Recombinant Human ALDH1A2 Protein (Met1-Ser518), N-His-tagged

Cat. No. ALDH1A2-0035H Lot. No. (See product label)

SPECIFICATION

Product Overview	Recombinant human ALDH1A2 (Met1-Ser518) was fused with the N-terminal His tag and was expressed in E. coli.
Species	Human
Source	E.coli
ProteinLength	Met1-Ser518
Form	Lyophilized powder/frozen liquid
Molecular Mass	56.98 kDa
Purity	>90% as determined by SDS-PAGE
Notes	For research use only.
Storage	Use a manual defrost freezer and avoid repeated freeze thaw cycles. Store at 2 to 8 centigrade for one week. Store at -20 to -80 centigrade for twelve months from the date of receipt.
Storage Buffer	Supplied as solution form in PBS or lyophilized from PBS.
Reconstitution	Reconstitute in sterile water for a stock solution.

 Tel: 1-631-559-9269 1-516-512-3133

 Email: info@creative-biomart.com  Fax: 1-631-938-8127

 45-1 Ramsey Road, Shirley, NY 11967, USA

Shipping

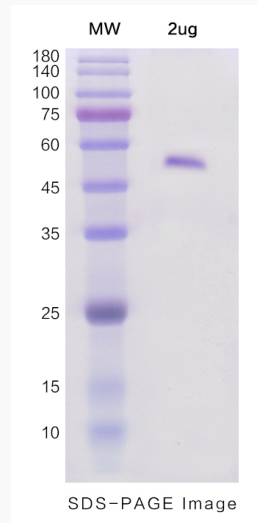
They are shipped out with dry ice/blue ice unless customers require otherwise.

GENE INFORMATION

Gene Name	ALDH1A2 aldehyde dehydrogenase 1 family member A2 [Homo sapiens (human)]
Official Symbol	ALDH1A2
Synonyms	ALDH1A2; aldehyde dehydrogenase 1 family member A2; DIH4; RALDH2; RALDH2-T; RALDH(II);
Gene ID	8854
mRNA Refseq	NM_170697
Protein Refseq	NP_733798
MIM	603687
UniProt ID	O94788

 Tel: 1-631-559-9269 1-516-512-3133 Email: info@creative-biomart.com  Fax: 1-631-938-8127 45-1 Ramsey Road, Shirley, NY 11967, USA

SDS-PAGE



 Tel: 1-631-559-9269 1-516-512-3133

 Email: info@creative-biomart.com  Fax: 1-631-938-8127

 45-1 Ramsey Road, Shirley, NY 11967, USA