

## Recombinant Human ALDH1A2 Protein (Met1-Val422), N-His-tagged

Cat. No. ALDH1A2-0036H    Lot. No. (See product label)

### SPECIFICATION

<b>Product Overview</b>	Recombinant human ALDH1A2 (Met1-Val422) was fused with the N-His tag and was expressed in E. coli.
<b>Species</b>	Human
<b>Source</b>	E.coli
<b>ProteinLength</b>	Met1-Val422
<b>Form</b>	Lyophilized powder/frozen liquid
<b>Molecular Mass</b>	48.47 kDa
<b>Purity</b>	>90% as determined by SDS-PAGE
<b>Notes</b>	For research use only.
<b>Storage</b>	Use a manual defrost freezer and avoid repeated freeze thaw cycles. Store at 2 to 8 centigrade for one week. Store at -20 to -80 centigrade for twelve months from the date of receipt.
<b>Storage Buffer</b>	0.01M PBS, pH 7.4, 0.02% NLS
<b>Reconstitution</b>	Reconstitute in sterile water for a stock solution.

 Tel: 1-631-559-9269    1-516-512-3133

 Email: [info@creative-biomart.com](mailto:info@creative-biomart.com)     Fax: 1-631-938-8127

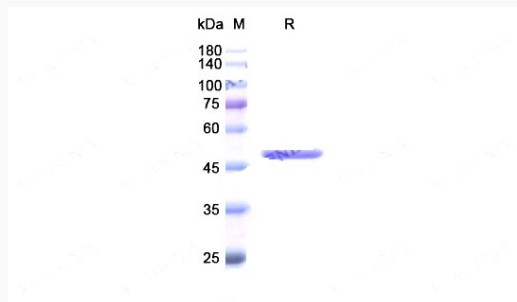
 45-1 Ramsey Road, Shirley, NY 11967, USA

**Shipping** They are shipped out with dry ice/blue ice unless customers require otherwise.

## GENE INFORMATION

<b>Gene Name</b>	ALDH1A2 aldehyde dehydrogenase 1 family member A2 [ Homo sapiens (human) ]
<b>Official Symbol</b>	ALDH1A2
<b>Synonyms</b>	ALDH1A2; aldehyde dehydrogenase 1 family member A2; DIH4; RALDH2; RALDH2-T; RALDH(II);
<b>Gene ID</b>	8854
<b>mRNA Refseq</b>	NM_170697
<b>Protein Refseq</b>	NP_733798
<b>MIM</b>	603687
<b>UniProt ID</b>	O94788

## SDS-PAGE



Tel: 1-631-559-9269 1-516-512-3133

Email: [info@creative-biomart.com](mailto:info@creative-biomart.com) Fax: 1-631-938-8127

45-1 Ramsey Road, Shirley, NY 11967, USA