

Recombinant Human ALDH1A2 Protein, His-tagged

Cat. No. ALDH1A2-1112H **Lot. No.** (See product label)

SPECIFICATION

Product Overview	Recombinant Human ALDH1A2 Protein (1-518aa) was expressed in yeast with N-terminal His-tag.
Species	Human
Source	Yeast
ProteinLength	1-518 a.a.
Form	Tris-based buffer, 50% glycerol.
Molecular Mass	58.7 kDa
AA Sequence	<p>MTSSKIEMPGEVKADPAALMASLHLLPSPTPNLEIKYTKIFINNEWQNSESGRVFPVY NPATGEQVCEVQEADKADIDKAVQAARLAFSLGSVWRRMDASERGRLLDKLADLVE RDRAVLATMESLNGGKPFLLQAFYVDLQGVIKTFRYAGWADKIHGMTIPVDGDYFTF TRHEPIGVCGQIIPWNFLLMFAWKIAPALCCGNTVVIKPAEQTPLSALYMGALIKEA GFPPGVINILPGYGPTAGAAIASHIGIDKIAFTGSTEVGKLIQEAAGRSNLKRVTLLELG GKSPNIIFADADLDYAVEQAHQGVFFNQQCCTAGSRIFVEESIYEEFVRRSVERAK RRVVGSFPDPTTEQGPQIDKKQYNKILELIQSGVAEGAKLECGGKGLGRKGFIEPT VFSNVTDDMRIAKEEIFGPVQEILRFKTMDEVIERANNSDFGLVAAVFTNDINKALTVS SAMQAGTVWINCYNALNAQSPFGGFKMSGNGREMGEFGLREYSEVKTVTVKIPQK NS</p>
Purity	Greater than 90% as determined by SDS-PAGE.

 Tel: 1-631-559-9269 1-516-512-3133

 Email: info@creative-biomart.com  Fax: 1-631-938-8127

 45-1 Ramsey Road, Shirley, NY 11967, USA

Storage The shelf life of liquid form is 6 months at -20 centigrade/-80 centigrade. The shelf life of lyophilized form is 12 months at -20 centigrade/-80 centigrade.

GENE INFORMATION

Gene Name [ALDH1A2 aldehyde dehydrogenase 1 family member A2 \[Homo sapiens \(human\) \]](#)

Official Symbol [ALDH1A2](#)

Synonyms ALDH1A2; aldehyde dehydrogenase 1 family member A2; RALDH2; RALDH2-T; RALDH(II); retinal dehydrogenase 2; RALDH 2; retinaldehyde-specific dehydrogenase type 2; EC 1.2.1.36

Gene ID [8845](#)

mRNA Refseq [NM_001206897](#)

Protein Refseq [NP_001193826](#)

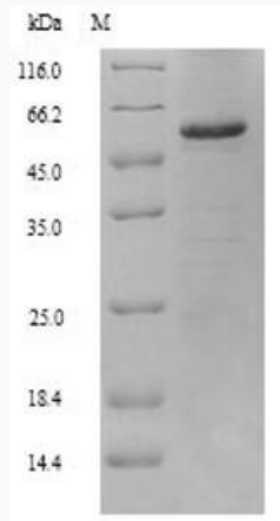
MIM [603687](#)

UniProt ID [O94788](#)

 Tel: 1-631-559-9269 1-516-512-3133

 Email: info@creative-biomart.com  Fax: 1-631-938-8127

 45-1 Ramsey Road, Shirley, NY 11967, USA



 Tel: 1-631-559-9269 1-516-512-3133

 Email: info@creative-biomart.com  Fax: 1-631-938-8127

 45-1 Ramsey Road, Shirley, NY 11967, USA