

Recombinant Human ALDH1A2 protein, His & T7-tagged

Cat. No. ALDH1A2-1357H **Lot. No.** (See product label)

SPECIFICATION

Product Overview	Recombinant Human ALDH1A2 aa. (Met1~Ser422 (Accession# O94788) fused with N-terminal His & T7 tag was produced in E. coli cells.
Species	Human
Source	E.coli
ProteinLength	Met1~Ser422
Description	This protein belongs to the aldehyde dehydrogenase family of proteins. The product of this gene is an enzyme that catalyzes the synthesis of retinoic acid (RA) from retinaldehyde. Retinoic acid, the active derivative of vitamin A (retinol), is a hormonal signaling molecule that functions in developing and adult tissues. The studies of a similar mouse gene suggest that this enzyme and the cytochrome CYP26A1, concurrently establish local embryonic retinoic acid levels which facilitate posterior organ development and prevent spina bifida. Four transcript variants encoding distinct isoforms have been identified for this gene.
Form	Freeze-dried powder
Molecular Mass	Predicted Molecular Mass: 49.8kDa
Endotoxin	<1.0EU per 1g (determined by the LAL method)
Purity	>90%

 Tel: 1-631-559-9269 1-516-512-3133

 Email: info@creative-biomart.com  Fax: 1-631-938-8127

 45-1 Ramsey Road, Shirley, NY 11967, USA

Characteristic	The isoelectric point is 6.
Applications	SDS-PAGE; WB; ELISA; IP.
Stability	The thermal stability is described by the loss rate. The loss rate was determined by accelerated thermal degradation test, that is, incubate the protein at 37°C for 48h, and no obvious degradation and precipitation were observed. The loss rate is less than 5% within the expiration date under appropriate storage condition.
Storage	Avoid repeated freeze/thaw cycles. Store at 2-8°C for one month. Aliquot and store at -80°C for 12 months.
Storage buffer	Supplied as lyophilized form in PBS, pH7.4, containing 5% trehalose, 0.01% sarcosyl.
Reconstitution	Reconstitute in sterile PBS, pH7.2-pH7.4.

GENE INFORMATION

Gene Name	ALDH1A2 aldehyde dehydrogenase 1 family member A2 [Homo sapiens (human)]
Official Symbol	ALDH1A2
Synonyms	ALDH1A2; aldehyde dehydrogenase 1 family member A2; RALDH2; RALDH2-T; RALDH(II); retinal dehydrogenase 2; RALDH 2; retinaldehyde-specific dehydrogenase type 2
Gene ID	8854
mRNA Refseq	NM_001206897.1
Protein Refseq	NP_001193826.1

 Tel: 1-631-559-9269 1-516-512-3133

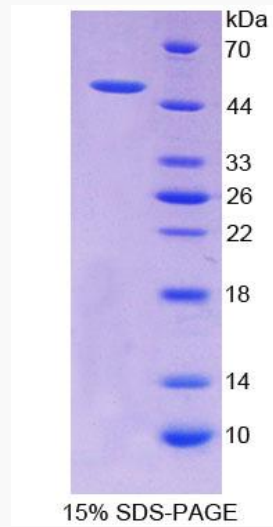
 Email: info@creative-biomart.com  Fax: 1-631-938-8127

 45-1 Ramsey Road, Shirley, NY 11967, USA

UniProt ID

O94788

SDS-PAGE



 Tel: 1-631-559-9269 1-516-512-3133

 Email: info@creative-biomart.com  Fax: 1-631-938-8127

 45-1 Ramsey Road, Shirley, NY 11967, USA