

Recombinant Human ALDH1A2 Protein, Myc/DDK-tagged, C13 and N15-labeled

Cat. No. ALDH1A2-2984H **Lot. No.** (See product label)

SPECIFICATION

Product Overview

ALDH1A2 MS Standard C13 and N15-labeled recombinant protein (NP_003879) with a C-terminal MYC/DDK tag, was expressed in HEK293 cells.

Species

Human

Source

HEK293

Description

This protein belongs to the aldehyde dehydrogenase family of proteins. The product of this gene is an enzyme that catalyzes the synthesis of retinoic acid (RA) from retinaldehyde. Retinoic acid, the active derivative of vitamin A (retinol), is a hormonal signaling molecule that functions in developing and adult tissues. The studies of a similar mouse gene suggest that this enzyme and the cytochrome CYP26A1, concurrently establish local embryonic retinoic acid levels which facilitate posterior organ development and prevent spina bifida. Four transcript variants encoding distinct isoforms have been identified for this gene.

Molecular Mass

56.5 kDa

AA Sequence

MTSSKIEMPGEVKADPAALMASLHLLPSPTPNLEIKYTKIFINNEWQNSESGRVFPVY
 NPATGEQVCEVQEADKADIDKAVQAARLAFSLGVSVWRRMDASERGRLLDKLADLVE
 RDRAVLATMESLNGGKPFLLQAFYVDLQGVIKTFRYAGWADKIHGMTIPVDGDYFTF
 TRHEPIGVCGQIIPWNFPLLMFAWKIAPALCCGNTVVIKPAEQTPLSALYMGALIKEA
 GFPPGVINILPGYGPTAGAAIASHIGIDKIAFTGSTEVGKLIQEAAGRSNLKRVTLLELG

 Tel: 1-631-559-9269 1-516-512-3133

 Email: info@creative-biomart.com  Fax: 1-631-938-8127

 45-1 Ramsey Road, Shirley, NY 11967, USA

GKSPNIIFADADLDYAVEQAHQG VFFNQGCCTAGSRIFVEESIYEEFVRRSVERAK
 RRVVGSFPDPTTEQGPQIDKKQYNKILELIQSGVAEGAKLECGGKGLGRKGFPIEPT
 VFSNVTDDMRIAKEEIFGPVQEILRFKTMDEVIERANNSDFGLVAAVFTNDINKALTVS
 SAMQAGTVWINCYNALNAQSPFGGFKMSGNGREMGEFGLREYSEVKT VTKIPQK
 NSTRTRPLEQKLISEEDLAANDILDYKDDDDKV

Purity > 80% as determined by SDS-PAGE and Coomassie blue staining

Stability Stable for 3 months from receipt of products under proper storage and handling conditions.

Storage Store at -80 centigrade. Avoid repeated freeze-thaw cycles.

Concentration 50 µg/mL as determined by BCA

Storage Buffer 100 mM glycine, 25 mM Tris-HCl, pH 7.3.

GENE INFORMATION

Gene Name [ALDH1A2 aldehyde dehydrogenase 1 family member A2 \[Homo sapiens \(human\) \]](#)

Official Symbol [ALDH1A2](#)

Synonyms ALDH1A2; aldehyde dehydrogenase 1 family member A2; RALDH2; RALDH2-T; RALDH(II); retinal dehydrogenase 2; RALDH 2; retinaldehyde-specific dehydrogenase type 2; EC 1.2.1.36

Gene ID [8854](#)

mRNA Refseq [NM_003888](#)

 Tel: 1-631-559-9269 1-516-512-3133

 Email: info@creative-biomart.com  Fax: 1-631-938-8127

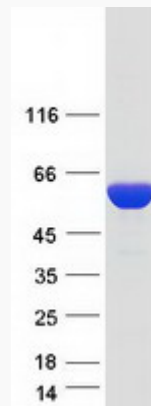
 45-1 Ramsey Road, Shirley, NY 11967, USA

Protein Refseq NP_003879

MIM 603687

UniProt ID O94788

SDS-PAGE



 Tel: 1-631-559-9269 1-516-512-3133

 Email: info@creative-biomart.com  Fax: 1-631-938-8127

 45-1 Ramsey Road, Shirley, NY 11967, USA