

## Recombinant Human ALDH1A3 protein, His-tagged

Cat. No. ALDH1A3-3633H Lot. No. (See product label)

### SPECIFICATION

<b>Product Overview</b>	Recombinant Human ALDH1A3 protein(1-163 aa), fused with N-terminal His tag, was expressed in E. coli.
<b>Species</b>	Human
<b>Source</b>	E.coli
<b>ProteinLength</b>	1-163 aa
<b>Tag</b>	N-His
<b>Form</b>	The purified protein was Lyophilized from sterile PBS (58mM Na <sub>2</sub> HPO <sub>4</sub> , 17mM NaH <sub>2</sub> PO <sub>4</sub> , 68mM NaCl, pH7.4). 5 % trehalose and 5 % mannitol are added as protectant before lyophilization.
<b>Purity</b>	95%, by SDS-PAGE with Coomassie Brilliant Blue staining.
<b>Storage</b>	Short-term storage: Store at 2-8°C for (1-2 weeks). Long-term storage: Aliquot and store at -20°C to -80°C for up to 3 months, reconstitution with sterile water and addition of an equal volume of glycerol. Avoid repeat freeze-thaw cycles.
<b>Reconstitution</b>	Reconstitute at 0.25 µg/µl in 200 µl sterile water for short-term storage. After reconstitution with sterile water, if glycerol has no effect on subsequent experiments, it is recommended to add an equal volume of glycerol for long-term storage.

 Tel: 1-631-559-9269 1-516-512-3133

 Email: [info@creative-biomart.com](mailto:info@creative-biomart.com)  Fax: 1-631-938-8127

 45-1 Ramsey Road, Shirley, NY 11967, USA

**AA Sequence**

MATANGAVENGQPDRKPPALPRPIRNLEVKFTKIFINNEWHESKSGKKFATCNPSTR  
EQICEVEEGDKPDVDKAVEAAQVAFQQRGSPWRRLDALSRGRLHQLADLVERDRA  
TLAALETMDTGKPFLLHAFFIDLEGCIRTLRYFAGWADKIQGKTIPTDDNVV

## GENE INFORMATION

**Gene Name**

[ALDH1A3 aldehyde dehydrogenase 1 family, member A3 \[ Homo sapiens \]](#)

**Official Symbol**

[ALDH1A3](#)

**Synonyms**

ALDH1A3; aldehyde dehydrogenase 1 family, member A3; ALDH6; aldehyde dehydrogenase family 1 member A3; RALDH3; retinaldehyde dehydrogenase 3; RALDH-3; aldehyde dehydrogenase 6; acetaldehyde dehydrogenase 6; ALDH1A6;

**Gene ID**

[220](#)

**mRNA Refseq**

[NM\\_000693](#)

**Protein Refseq**

[NP\\_000684](#)

**MIM**

[600463](#)

**UniProt ID**

[P47895](#)

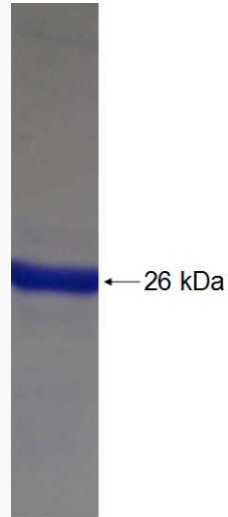
 Tel: 1-631-559-9269 1-516-512-3133

 Email: [info@creative-biomart.com](mailto:info@creative-biomart.com)  Fax: 1-631-938-8127

 45-1 Ramsey Road, Shirley, NY 11967, USA



SDS-PAGE



Tel: 1-631-559-9269 1-516-512-3133

Email: [info@creative-biomart.com](mailto:info@creative-biomart.com) Fax: 1-631-938-8127

45-1 Ramsey Road, Shirley, NY 11967, USA