

Recombinant Human ALDH1A3 protein, GST-tagged

Cat. No. ALDH1A3-3634H Lot. No. (See product label)

SPECIFICATION

Product Overview	Recombinant Human ALDH1A3 protein(40-124 aa), fused with N-terminal GST tag, was expressed in E. coli.
Species	Human
Source	E.coli
ProteinLength	40-124 aa
Tag	N-GST
Form	The purified protein was Lyophilized from sterile PBS (58mM Na ₂ HPO ₄ ,17mM NaH ₂ PO ₄ , 68mM NaCl, pH7.4). 5 % trehalose and 5 % mannitol are added as protectant before lyophilization.
Purity	85%, by SDS-PAGE with Coomassie Brilliant Blue staining.
Storage	Short-term storage: Store at 2-8°C for (1-2 weeks). Long-term storage: Aliquot and store at -20°C to -80°C for up to 3 months, reconstitution with sterile water and addition of an equal volume of glycerol. Avoid repeat freeze-thaw cycles.
Reconstitution	Reconstitute at 0.25 µg/µl in 200 µl sterile water for short-term storage. After reconstitution with sterile water, if glycerol has no effect on subsequent experiments, it is recommended to add an equal volume of glycerol for long-term storage.

 Tel: 1-631-559-9269 1-516-512-3133

 Email: info@creative-biomart.com  Fax: 1-631-938-8127

 45-1 Ramsey Road, Shirley, NY 11967, USA

AA Sequence WHESKSGKKFATCNPSTREQICEVEEGDKPDVDKAVEAAQVAFQGRGSPWRRLDAL
SRGRLHQLADLVERDRATLAALETMDTGK

GENE INFORMATION

Gene Name ALDH1A3 aldehyde dehydrogenase 1 family, member A3 [Homo sapiens]

Official Symbol ALDH1A3

Synonyms ALDH1A3; aldehyde dehydrogenase 1 family, member A3; ALDH6; aldehyde dehydrogenase family 1 member A3; RALDH3; retinaldehyde dehydrogenase 3; RALDH-3; aldehyde dehydrogenase 6; acetaldehyde dehydrogenase 6; ALDH1A6;

Gene ID 220

mRNA Refseq NM_000693

Protein Refseq NP_000684

MIM 600463

UniProt ID P47895

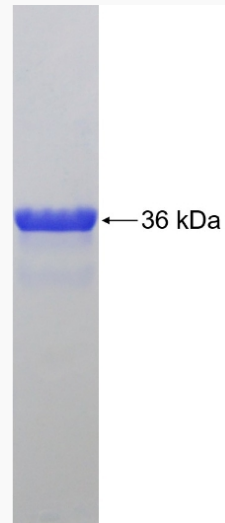
 Tel: 1-631-559-9269 1-516-512-3133

 Email: info@creative-biomart.com  Fax: 1-631-938-8127

 45-1 Ramsey Road, Shirley, NY 11967, USA



SDS-PAGE



Tel: 1-631-559-9269 1-516-512-3133

Email: info@creative-biomart.com Fax: 1-631-938-8127

45-1 Ramsey Road, Shirley, NY 11967, USA