

Recombinant Full Length Human ALDH1L1 Protein, C-Flag-tagged

Cat. No. ALDH1L1-1509HFL **Lot. No.** (See product label)

SPECIFICATION

Product Overview	Recombinant Full Length Human ALDH1L1 Protein, fused to Flag-tag at C-terminus, was expressed in Mammalian cells.
Species	Human
Source	Mammalian Cells
Description	The protein encoded by this gene catalyzes the conversion of 10-formyltetrahydrofolate, nicotinamide adenine dinucleotide phosphate (NADP ⁺), and water to tetrahydrofolate, NADPH, and carbon dioxide. The encoded protein belongs to the aldehyde dehydrogenase family. Loss of function or expression of this gene is associated with decreased apoptosis, increased cell motility, and cancer progression. There is an antisense transcript that overlaps on the opposite strand with this gene locus. Alternative splicing results in multiple transcript variants.
Form	25 mM Tris HCl, pH 7.3, 100 mM glycine, 10% glycerol.
Molecular Mass	98.6 kDa
AA Sequence	MKIAVIGQSLFGQEYVYCHLRKEGHEVVGFTVPDKDGGKADPLGLEAEKDGVPVFKY SRWRAKGGQALPDVV AKYQALGAELNVLPFCSQFIPMEIISAPRHGSIYHPSLLPRHR GASAINWTLIHGDKKGGFSIFWADDG LDTGDLLLQKECEVLPDDTVSTLYNRFLFPE GIKGMVQAVRLIAEGKAPRLPQPEEGATYEGIQKKETAK INWDQPAEAIHNWIRGND KVPGAWTEACEQKLTFFNSTLNTSGLVPEGDALPIPGAHRPGVVTKAGLILF GNDD

 Tel: 1-631-559-9269 1-516-512-3133

 Email: info@creative-biomart.com  Fax: 1-631-938-8127

 45-1 Ramsey Road, Shirley, NY 11967, USA

KMLLVKNIQLEDGKMILASNFFKGAASSVLELTEAELVTAEAVRSFWQRILPKVLEVE
 DSTDFFKS GAASVDVVRLVEEVKELCDGLELENEDVYMASTFGDFIQLLVRKLRGH
 DEEGECSIDYVEMAVNKRTVRM PHQLFIGGEFVDAEGAKTSETINPTDGSVICQVSL
 AQVTDVDKAVAAAKDAFENGRWGKIGARDRGRMLY RLADLMEQHQEELATIEALD
 AGAVYTLALKTHVGMISIQTFRYFAGWCDKIQQSTIPINQARPNRNLTLTR KEPVGVG
 GIIPWNYPLMMLSWKTAACLAAGNTVVIKPAQVTPLTALKFAELTLKAGIPKGVVNVL
 PGSG SLVGQRLSDHPDVRKIGFTGSTEVGKHIMKSCAISNVKKVSLELGGKSPLIIFA
 DCDLNKAVQMGMSSVF FNKGENCIAAGRLFVEDSIHDEFVRRRVVEEVRKMKVGNP
 LDRDTDHGPQNHHAHLVKLMEYCQHGVEGA TLVCGGNQVPRPGFFFEPTVFTD
 VEDHMFIAKEESFGPVMISRFADGDLDAVLSRANATEFGLASGVFT
 RDINKALYVSDKLQAGTVFVNTYNKTDVAAPFGGFKQSGFGKDLGEAALNEYLRVK
 TVTFEYTRTRPLEQKLISEEDLAANDILDYKDDDDKV

Purity	> 80% as determined by SDS-PAGE and Coomassie blue staining.
Stability	Stable for 12 months from the date of receipt of the product under proper storage and handling conditions. Avoid repeated freeze-thaw cycles.
Storage	Store at -80 centigrade.
Concentration	>50 ug/mL as determined by microplate BCA method.
Preparation	Recombinant protein was captured through anti-DDK affinity column followed by conventional chromatography steps.
Protein Families	Druggable Genome
Protein Pathways	One carbon pool by folate
Full Length	Full L.

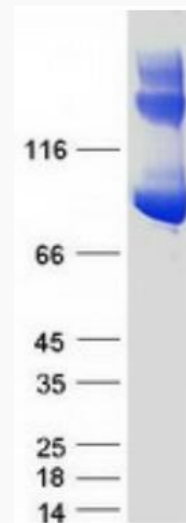
 Tel: 1-631-559-9269 1-516-512-3133

 Email: info@creative-biomart.com  Fax: 1-631-938-8127

 45-1 Ramsey Road, Shirley, NY 11967, USA

GENE INFORMATION

Gene Name	ALDH1L1 aldehyde dehydrogenase 1 family member L1 [Homo sapiens (human)]
Official Symbol	ALDH1L1
Synonyms	FDH; FTHFD; 10-fTHF; 10-FTHFDH
Gene ID	10840
mRNA Refseq	NM_012190.4
Protein Refseq	NP_036322.2
MIM	600249
UniProt ID	O75891



Tel: 1-631-559-9269 1-516-512-3133

Email: info@creative-biomart.com Fax: 1-631-938-8127

45-1 Ramsey Road, Shirley, NY 11967, USA



Coomassie blue staining of purified ALDH1L1 protein.

 Tel: 1-631-559-9269 1-516-512-3133

 Email: info@creative-biomart.com  Fax: 1-631-938-8127

 45-1 Ramsey Road, Shirley, NY 11967, USA